

Beyond your imagination



Designs & Collections



About Green-Flor®

Worldwide at the top

Taiwan has a worldwide reputation for its high-tech and electronics industry. The modular resilient floors also have their origin in Taiwan and are currently leading in the global market for flooring.

The Green-Flor® product program is one of the latest creations, developed specifically for the European market. The Green-Flor® brand belongs to a group of companies involved in production, wholesale, project- and retail businesses for the past 40 years. Their dedication, commitment, sustainability and technologies combined with their long term ability for developing interior design products, led them to reach the number 1 position in their local Asian market as well as a leading position in exports. At present Green-Flor® distributes its products to Europe, North America, Asia and Australia. Substantial knowledge of the market and supply industry also secured them the access to the best input materials, the latest technical innovations and the best designs.

Through the cooperation of the Green-Flor® organization with locally renowned and specialized flooring and interior decoration companies in different countries, quality, service and the right product advice are guaranteed. Green-Flor® aims to bring an unprecedented wide and unique range of flooring solutions, tailored to your needs.

Technically certified & Safe

Having roots in Asia, Green-Flor® products are already meeting the various standards, set in both Taiwan and Japan. These standards are equal or are based on the American norms-ASTM, hence a vast area is covered. Especially for the Green-Flor® program, all necessary test of conformity to the EN standards passed the laboratory tests in independent European institutes, officially accredited for conveying such tests. The product therefore provides assurance on all important characteristics for floorings like color, durability and dimension stability. The manufacturing process itself has been certified with ISO 9001. With respect to EN 14041, prescribing e.g. fire tests and anti-slip norms, the Green-Flor® products passed all tests successfully, hence are labeled with the CE marking Green-Flor®. pursues a policy of bringing you only recognized and proven quality, assuring the end-user long-life professional solutions.

Sustainable solutions

In developing the Green-Flor® program, environment, health and indoor air quality are primary concern.

All industrial sites for the Green-Flor® products are ISO 14001 certified. In addition, they meet the requirements of EN 14041 relating to harmful substances as formaldehyde and carry therefore the CE label. Furthermore the products are also tested in view of the compulsory REACH test, for production and imports in Europe, which prescribes a list of >150 Substances of Very High Concern for environment and health, for which Green-Flor® products also passed the test with good result.

All Green-Flor® products are designed in such a way, that they are 100% recyclable with VOC levels (volatile organic compounds) far below the European norms, ensuring good indoor air quality for which the products received the A+ certification. A very easy cleaning and maintenance of the product, also contributes to the reduction of the amount of water, cleaning chemicals and energy used.

For Green-Flor® it's essential to offer sustainable, responsible products which respects and spares the environment, before, during and after the production process and provides a pleasant and healthy living environment.

CONTENTS

About Green-Flor®	01
Why Green-Flor® Product?	03
Overview Green-Flor® collection	07
The Grand Class Collection	09
Modern Vintage	27
Modern Vintage Chic	31
Solid Essence	37
Master Trend	45
Master Collection	53
True Spirit	63
Nature Living	69
Tierra Nueva	77
Prime Inspiration	83
Stylish Grid	91
New Square & New Square Piazza	99
Pure & Powerful	107
Performance 70	111
Performance 70 XL & XXL	123
Nature Fit 30 Stark	131
Design Strip	143
Product Specifications	145
Installation Instruction	147
Maintenance	148

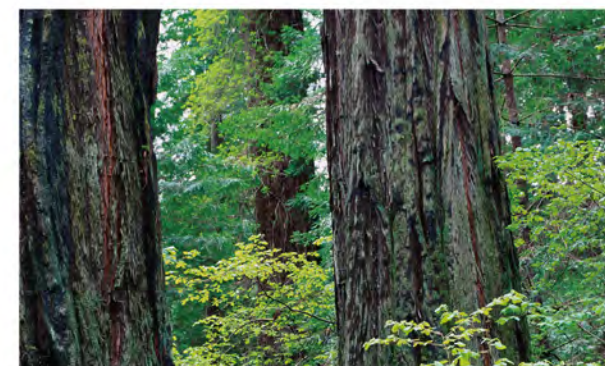


Why Green-Flor® products?



Authentic & Modular

Realistic, authentic and genuine are only a few words, characterizing our designs. The Green-Flor® flooring program offers a wide range of exclusive, noble, timeless, modern and trendsetting designs. The latest advanced printing and production techniques ensure the most accurate reproduction of the original material regarding color, depth and subtle nuances as nature originally provides. To enhance the natural genuine look of the designs, we offer a variety of embossing adapted to the specific designs enabling to create the most natural and original surface texture with its authentic and distinctive grains.



An additional standard feature for some products, having a V-groove at 4 sides of each plank or tile, provides an even more exclusive character and makes it come alive!

Because of the modularity of the product, it is possible to make the size of the planks and tiles to mirror as far as possible to the original products. The modularity also makes designing of your floor more flexible and applying a decorative accent even very easy. Easy to handle, install, maintain and repair are practical though additional important benefits of the Green-Flor® modular resilient floorings.

The Green-Flor® designs are nearly all protected designs, making them unique in the market. Adding for the vast majority of the wood patterns the innovative technique, in which multiple images are mixed in 1 design, the floor has a minimum of pattern repeat resulting in a maximum of natural and genuine appearance. As a result, and in contrast to vinyl flooring in rolls, the Green-Flor® modular resilient floorings are barely distinguishable from the real wooden - or stone floors.

Beyond your imagination

Suitable for underfloor heating and cooling

In new constructions more and more floorings are equipped with underfloor heating and cooling. The Green-Flor® products are designed and fit to be installed in these circumstances.



Comfortable in use

The products of Green-Flor® are designed for a maximum of user comfort. Firstly the surface doesn't feel cold like many other hard floorings. Additionally, as of the choice of material for the Green-Flor® modular resilient flooring, the 'walking' sound is significantly decreased compared to the traditional stone floor or for example laminate floor. Besides, the daily maintenance of the floor is basically restricted to a very easy sweeping or vacuum cleaning and eventually mopping of the floor. And since the floors are constituted of pure compact pvc, they have an excellent resistance against water and most other liquids.

Why Green-Flor® products?

Carefree use

The best proven and longest applied surface treatment for heterogeneous products in the market is a PVC wear layer with a thin protective PU coating. This is also the standard for Green-Flor® products whereas Green-Flor® goes 1 step beyond by bringing the Top Protection Plus system. The Top Protection Plus system is an innovative improved formulation which made this protective coating extra hard and consequently significantly better performing with respect to scratch resistance.

Furthermore, an increased quantity and therefore thicker coating layer contributes to the wear resistance of the products and equally results in a substantial longer conservation of the fresh and aesthetical look as well as a prolonged life time of the product itself. The ultimate dimension stability of the Green-Flor® modular resilient floorings are securing a stable and fixed size of the product during its lifetime, on the contrary to many other brands in this industry. This feature provides a continuing seamless fit between the planks or tiles in your floor which not only contributes to the required uniform look but also guarantees a carefree maintenance.



Highest quality standards

Green-Flor® products are manufactured and continually tested in our own laboratories, according to the highest quality standards in the industry. In addition, all products have been successfully tested in accordance with the strict European standards. The implemented ISO 9001 system in the production, thereby ensures that each product, is precisely traceable up to even the raw materials used. This not only ensures that the products are safe but also guarantees a long and carefree use. A warranty of up to 15 years in home situations, with e.g. a product from the Master Collection is therefore a logical consequence thereof.



Healthy living environment and environmental friendly

The high-quality raw materials used for the production of Green-Flor® modular resilient flooring, can be found in other types of vinyl products you already unnoticed use in everyday life. The automotive industry, food packaging industry, healthcare sector, and certainly multiple products in your interior decoration, are just an example.

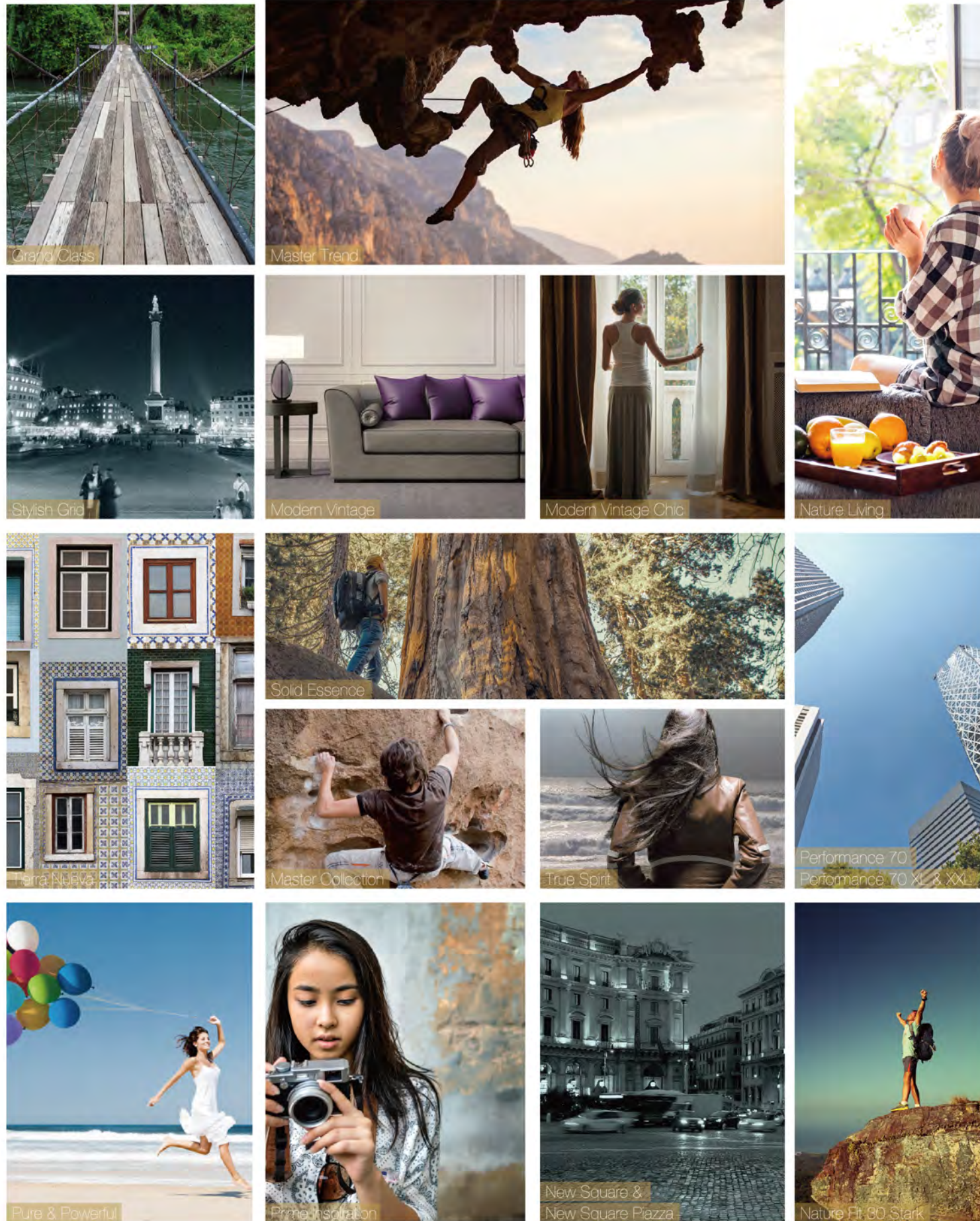
It is of course from utmost importance that in the raw materials used for producing the products, no heavy metals or other dangerous components, have been processed.

All Green-Flor® products are tested, certified and meeting all national and international legal requirements and in many cases exceed significantly the European standards. This also proven by the REACH certification (Registration, Evaluation, Authorisation of Chemicals) of the entire Green-Flor® program. In addition, all Green-Flor® products are developed in such a way, that they are 100% recyclable and during the life-time of the product very easy to maintain preventing the use of chemicals, excessive amounts of water and energy. But there is more to create a safe product and everyone will recognize the following situation: A product which still smells new! Now besides a happy feeling people in general experience, we should ensure that the substances which are released into the air and are inhaled by you, are safe for your health. This applies to all substances that you may or may not perceive. This especially with respect to the volatile organic compounds (VOC's). Green-Flor® products have been tested according to the designated norm for these VOC's - ISO 16000, which is an emission test over a period of 28 days. The result is that Green-Flor® products with respect to the total amount of volatile and semi-volatile air born compounds, are releasing even > 90% less than the standard of the norm prescribes and thus very well below the safety and health standards in Europe.

Next to this, the Green-Flor® products are having the results conform the German AgBB regulations and are certified conform the French A+ regulations.

Green-Flor® makes its name by bringing sustainable, responsible products which respect and conserve the environment before, during and after the production process and contributes to a healthy and enjoyable living environment.

The Green-Flor® Collection



		Type				
	Grand Class	Glue	2.5mm / 0.55mm	-	1422.4 x 228.6 mm	4 sides
	Modern Vintage	Glue	2.5mm / 0.55mm	-	304.8 x 76.2mm	4 sides
	Modern Vintage Chic	Glue	2.5mm / 0.55mm	-	720 x 144 mm	4 sides
	Solid Essence	Glue	2.5mm / 0.55mm	-	1422.4 x 228.6 mm	4 sides
	Master Trend	Glue	2.5mm / 0.55mm	-	1219.2 x 228.6 mm	4 sides
	Master Collection	Glue	2.5mm / 0.55mm	-	1219.2 x 228.6 mm	4 sides
	True Spirit	Glue	2.5mm / 0.55mm	-	1219.2 x 184.1 mm	4 sides
	Nature Living	Glue	2.0mm / 0.30mm	-	1219.2 x 228.6 mm	-
	Tierra Nueva	Glue	2.5mm / 0.55mm	457.2 x 457.2 mm	-	-
	Prime Inspiration	Glue	2.5mm / 0.55mm	914.4 x 457.2 mm	-	-
	Stylish Grid	Glue	2.5mm / 0.55mm	914.4 x 457.2 mm	-	-
	New Square	Glue	2.5mm / 0.55mm	600 x 600 mm	-	-
	New Square Piazza	Glue	2.5mm / 0.55mm	914.4 x 914.4 mm	-	-
	Pure & Powerful	Glue	2.5mm / 0.55mm	457.2 x 457.2 mm	-	-
	Performance 70	Loose Lay	5.0mm / 0.70mm	457.2 x 457.2 mm	1219.2 x 228.6 mm	4 sides
	Performance 70 XL	Loose Lay	5.0mm / 0.70mm	457.2 x 914.4 mm	1422.4 x 228.6 mm	4 sides
	Performance 70 XXL	Loose Lay	5.0mm / 0.70mm	914.4 x 914.4 mm	-	4 sides
	Nature Fit 30 Stark	Click	4.0mm / 0.30mm	-	1219.2 x 228.6 mm	-

The Grand Class Collection

Being surrounded and often immersed by technology in work and private, people are looking for balance in life. In parallel, the borders between work and home becoming increasingly blur, it incites a strong desire of bringing more nature into our interiors.

Green-Flor ® brings therefore an utterly exciting and new floor collection, with 4 new designs in a marvel of different color tone settings: The Grand Class Collection. Proposing an amalgamation of authentic and crafted designs with surprising and unexpected earthy muted tones but also exceptional stylish color combinations, a vast choice in setting the desired atmosphere is at your disposal.

The additional product features of the new robust plank size of 142.24 x 22.86 cm combined with the trusted characteristic Green-Flor ® advantages of super-matt, scratch resistant coating, enhanced with a surface texture generating the distinctive original wood grains and subtle v-groove on 4 sides, guarantees you a through nature inspired genuine top quality design product.

Push your boundaries in interior design !

1422.4 x 228.6 x 2.5 mm / 0.55 mm

■ 4 sides bevel

Harbor
Gallery
Woodland
Nordic



Part of the ocean, a shelter
Reunite and feeling home
A sense of freedom & adventure
Harboring creativity over the horizon
-Alistair Cornwallis

Harbor Selection

GW 804 Harbor - Yard



GW 801

Harbor - Avenue



GW 804

Harbor - Yard



GW 808

Harbor - Beach



GW 800

Harbor - Cabin



GW 808 Harbor - Beach

A place of serenity, a retreat
Nurtured by Zen and a touch of art
A sense of class & exclusivity
A place of desire with a heart

-Jean Baptiste Montbelliard



GW 851

Gallery - Imperial Grey



GW 855

Gallery - Black Pearl

Gallery Selection

GW 851 Gallery - Imperial Grey



GW 856

Gallery - Elegant Brown



GW 853

Gallery - Royal Brown



GW 856 Gallery - Elegant Brown



Sincere nature and authentic
United with craftsmanship and passion
A sense of personality & character
The true pied-à terre in wood and fashion
-Vicente De Bourbon

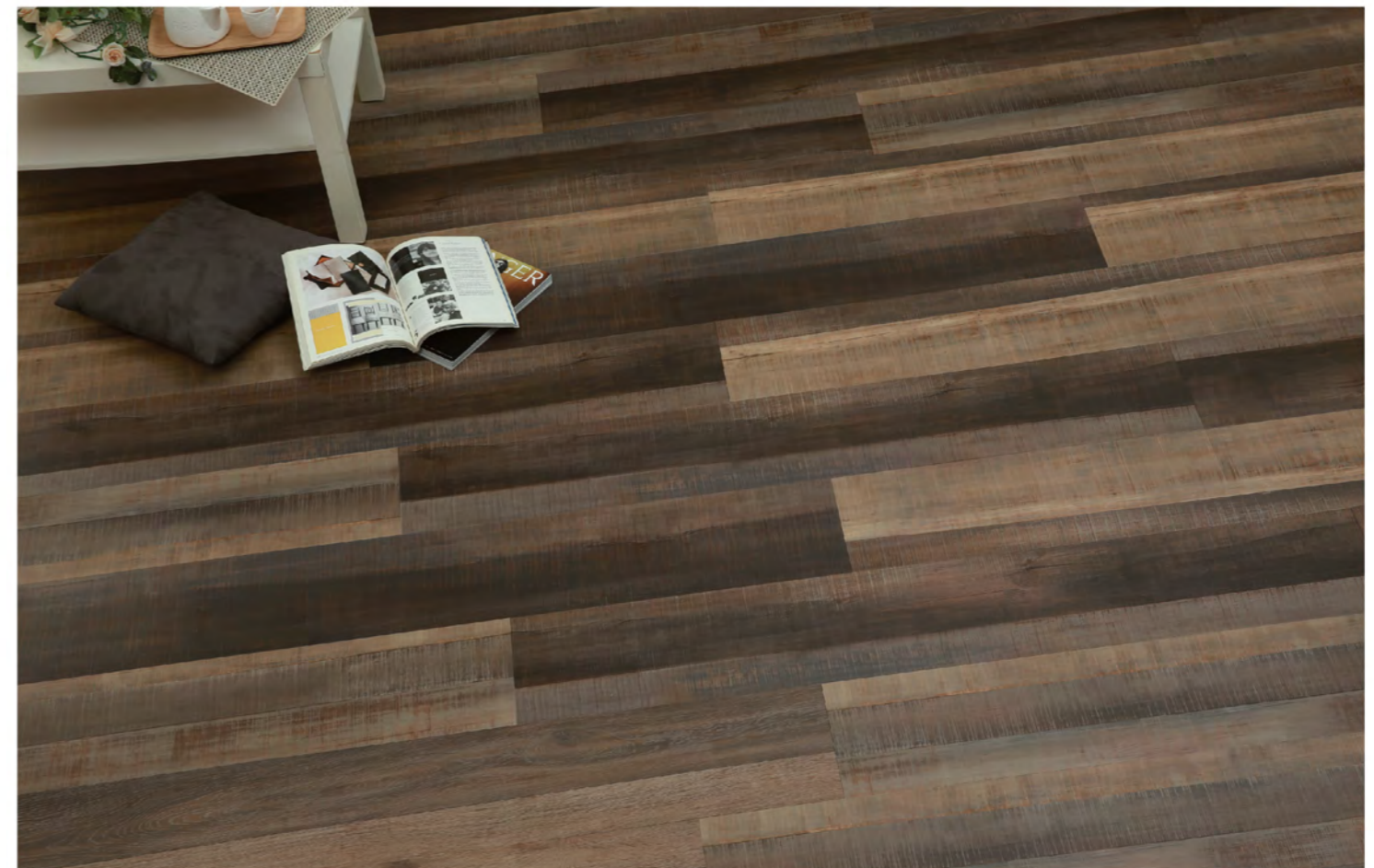
Woodland Selection

GW 824 Woodland - Tropical



GW 822

Woodland - Lake



GW 824

Woodland - Tropical



GW 820

Woodland - Sky



GW 825

Woodland - Timber



GW 824 Woodland - Tropical



Pure in simplicity and beauty
Understated elegance as a profile
A sense of honest materials & modernism
Earthy muted tones, a real life style

-Hjalmar Lillienberg

Nordic Selection

GW 871 Nordic - Ice White



GW 871

Nordic - Ice White



GW 875

Nordic - Lava Grey



GW 873

Nordic - Creek Brown



GW 873 Nordic - Creek Brown



Modern Vintage

304.8 x 76.2 x 2.5 mm / 0.55 mm
■ 4 sides bevel

The Modern Vintage collection is characterized by its timeless spirit and can therefore be combined with any interior design style. This "parquet" in fish-bone or block pattern is originally a traditional and highly specialized product. As of the multiple necessary steps in installation, this can only be performed by the best specialists in order to get the required final result and appearance. By using the latest production- and printing techniques, it is now possible to create a floor with an identical appearance whilst having significantly fewer steps in the installation method and becomes therefore more widely accessible. The Modern Vintage is an exclusive floor with contemporary designs that combines modern and vintage in every sense. A classic floor with a modern twist !

Modern Vintage



GWF 056

Oak - tundra beige



GWF 055

Oak - gold brown

Modern Vintage Chic

720 x 144 x 2.5 mm / 0.55 mm
4 sides bevel

Fresh, versatile and chic would be the right way to characterize the alluring herring bone products !

Since the launch of our product Modern Vintage already a few years ago, the massive resurgence of this type of product is un-stoppable in the flooring market. Therefore the Green-Flor® product program got its great extension with the Modern Vintage Chic.

A larger and wider plank which is working well in any space. From open-plan living to the smallest of spaces, these planks and patterns are adding interest and depth to the eye, making even relatively smaller spaces appear wider ! The newly created pure and natural designs and colors will mix harmoniously with a range of vintage and modern styles. They are suitable for adorning both period and contemporary properties, from the traditional Parisian apartment, to the ultra-modern home and offices.

A modern floor with a classic twist !

GWF 571 Oak original - timeless tan



Modern Vintage Chic



GWF 572

Oak original - serene nature



GWF 571

Oak original - timeless tan



GWF 573

Oak original - seasoned hazel



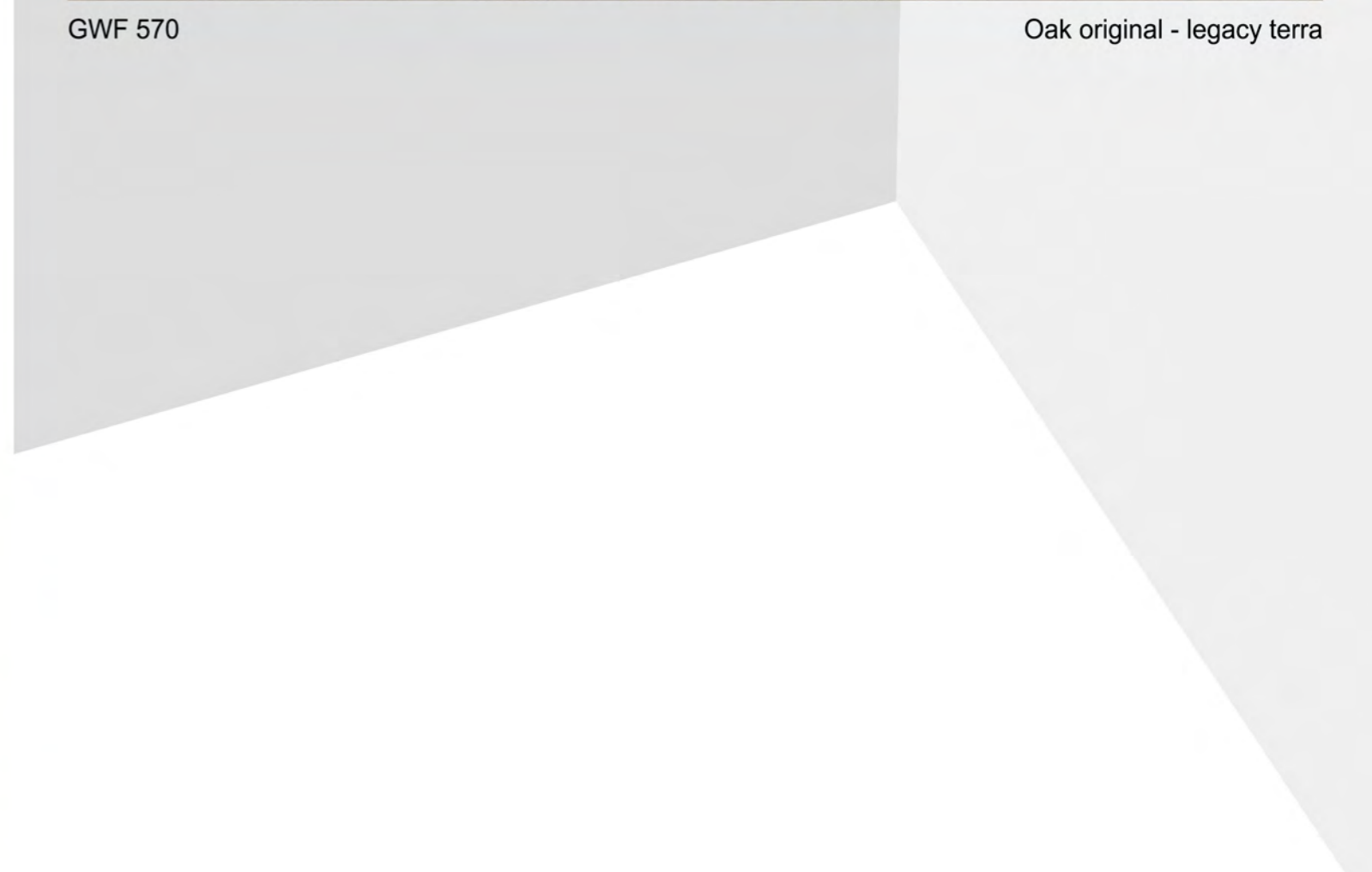
GWF 570

Oak original - legacy terra



GWF 574

Oak original - matured grey





Solid Essence

1422.4 x 228.6 x 2.5 mm / 0.55 mm
■ 4 sides bevel

Beautiful, sustainable, durable and infinitely variable in style and function, wood has been used in construction for thousands of years. Every piece of wood is as unique as your fingerprint. Enhanced by a great variation in grain patterns, colors and surface texture adding personality to a floor, it blends gracefully in with any architectural and decoration style.

Wood can also contribute to a greater sense of well-being as research has found that people feel an instinctive connection and attraction to natural materials such as wood. The Solid Essence Collection however will not only sparkle your senses but also add character and dimension to the designated space.

Inspired by natural timbers the Solid Essence Collections has a beautiful and rich choice of natural shades and comes in a robust size of 142,24 x 22,86 cm enhanced with a crafted mini bevel, underlining the pure, genuine and natural character of this collection.

Your nature with feeling & character!



Solid Essence



GW 326

Oak Crafted - umber brown



GW 321

Oak Crafted - warm brown



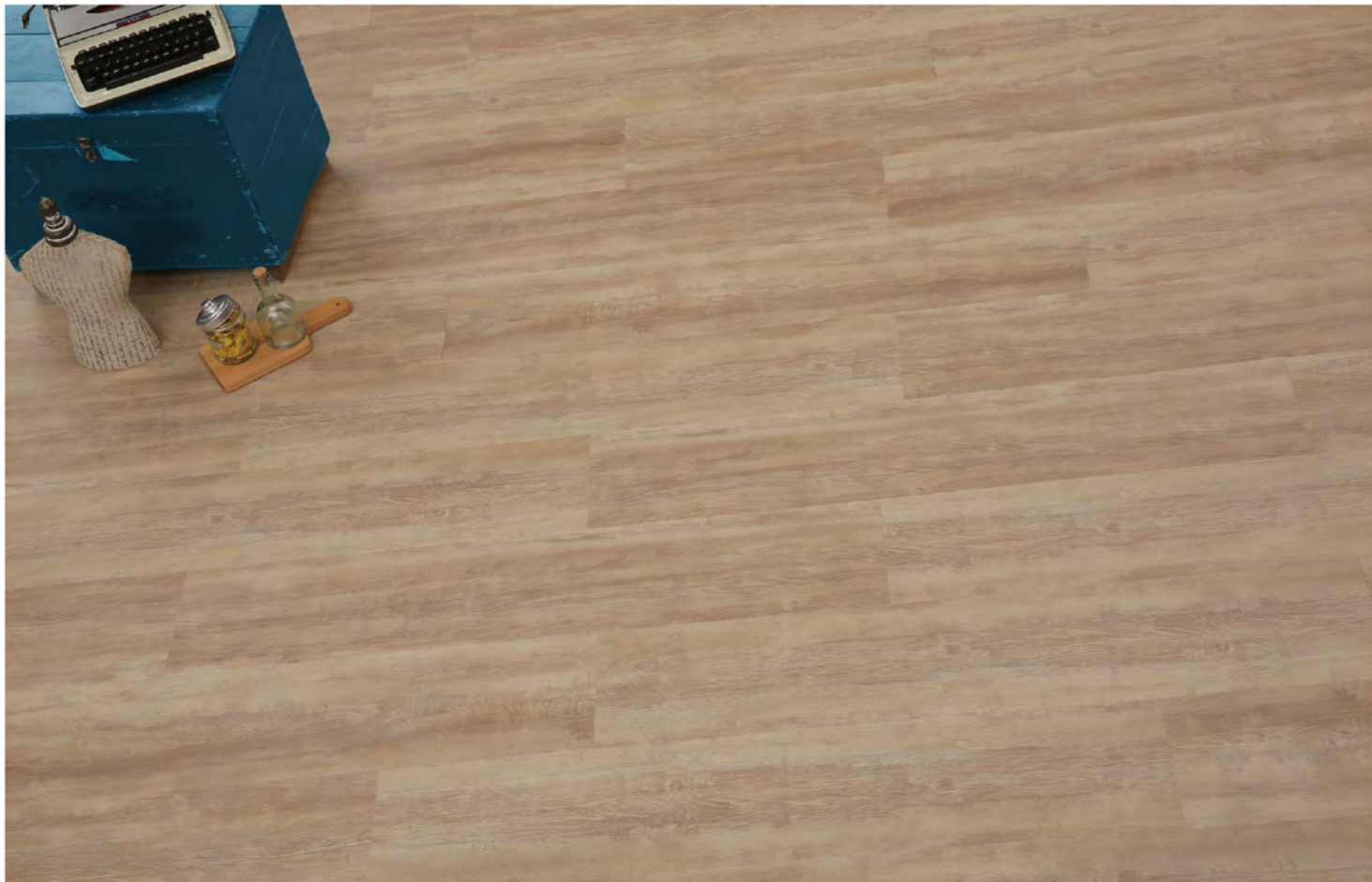
GW 325

Oak Crafted - fieldcorn brown



GW 323

Oak Crafted - subtle beige-grey



GW 322

Oak Crafted - warm taupe



GW 324

Oak Crafted - subtle grey-brown



GW 327

Oak Crafted - lava grey



GW 326 Oak Crafted - umber brown



Master Trend

1219.2 x 228.6 x 2.5 mm / 0.55 mm

■ 4 sides bevel

Success is no reason for change but for expansion !

The outstanding and best selling Green-Flor ® Master Collection is therefore now complemented by this new range of Master Trend designs. These gorgeous genuine new wood designs entirely match the latest interior trends. From serene oak designs in pure natural wood tints and warm greys, to subtle crafted wooden planks radiating real craftsmanship. All this in natural variegated colorways, accentuating the authentic look of the products. Enhanced with a surface texture generating the distinctive and original wood grains combined with a subtle v-groove on 4 sides, this exclusive and authentic floor is as close as nature originally provides.

Topped by the latest printing techniques, using multiple images in 1 floor, a minimum of duplication is fact and makes the Master Trend stand out, in a through nature inspired genuine appearance. (for references GW 071 to GW 079.)

An asset for every commercial project and a must for every interior at home !



Master Trend



GW 079

Oak crafted - blended cottage



GW 077

Oak crafted - blended timber



GW 078

Oak crafted - blended gris



GW 085

Oak authentic - bronze brown



GW 087

Oak authentic - ceruse beige



GW 086

Oak authentic - onyx black



GW 076

Oak original - serene nature



GW 073

Oak original - serene greige



GW 071

Oak original - pure essence



GW 072

Oak original - warm taupe

Master Collection

1219.2 x 228.6 x 2.5 mm / 0.55 mm
■ 4 sides bevel

Character, plank size but above all a wide, balanced design- and color pallet in the core of the latest interior trends. Enhanced with a surface texture generating the distinctive and original wood grains combined with a subtle v-groove on 4 sides, this exclusive and authentic floor is as close as nature originally provides. Topped by the latest printing techniques, using multiple images in 1 floor, a minimum of duplication is fact and makes the Master Collection stand out, in a through nature inspired genuine appearance.

An asset for every commercial project and a must for every interior at home.

GW 058 Oak - light brown



Master Collection



GW 049

Pine - fieldcorn brown



GW 058

Oak - light brown



GW 056

Oak - tundra beige



GW 050

Pine - flour brown



GW 055

Oak - gold brown



GW 053

Oak - almond brown



GW 054

Oak - umber brown



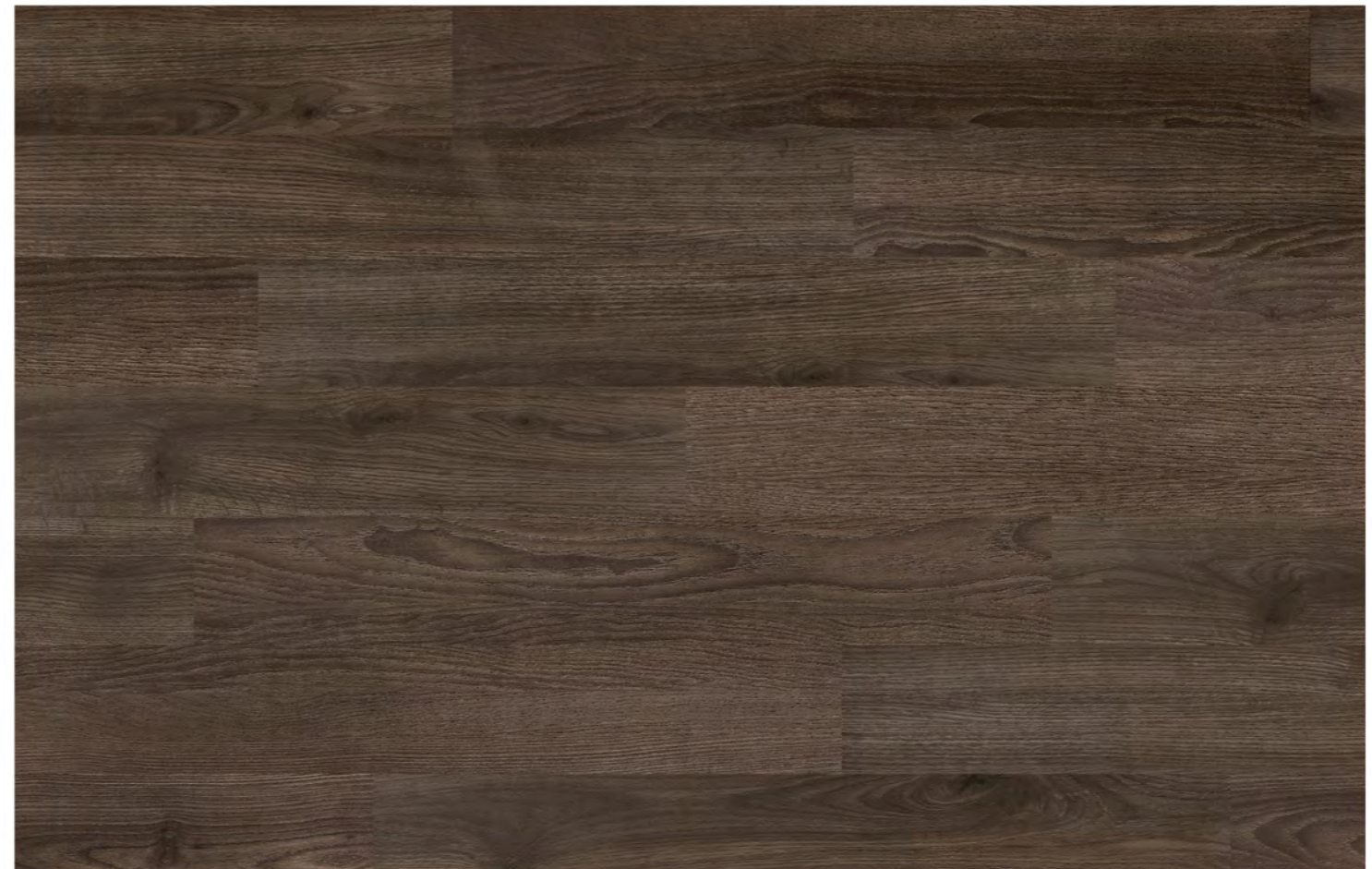
GW 048

Pine - barn brown



GW 059

Oak - contemporary indium grey



GW 052

Oak - ginger brown



GW 057

Oak - graphite grey

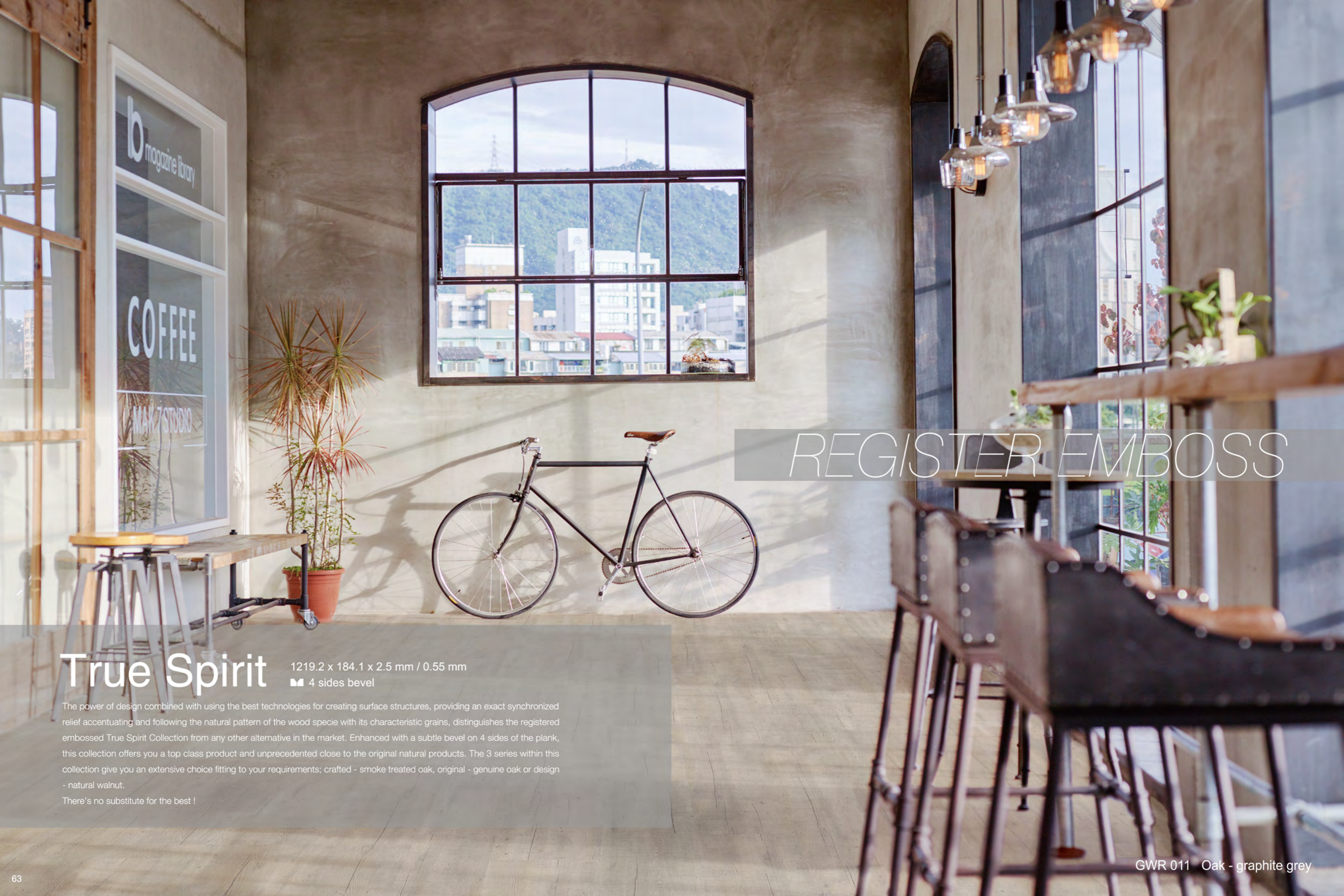


GW 051

Pine - terra brown



GW 049 Pine - fieldcorn brown



REGISTER EMBOSS

True Spirit

1219.2 x 184.1 x 2.5 mm / 0.55 mm
■ 4 sides bevel

The power of design combined with using the best technologies for creating surface structures, providing an exact synchronized relief accentuating and following the natural pattern of the wood specie with its characteristic grains, distinguishes the registered embossed True Spirit Collection from any other alternative in the market. Enhanced with a subtle bevel on 4 sides of the plank, this collection offers you a top class product and unprecedented close to the original natural products. The 3 series within this collection give you an extensive choice fitting to your requirements; crafted - smoke treated oak, original - genuine oak or design - natural walnut.

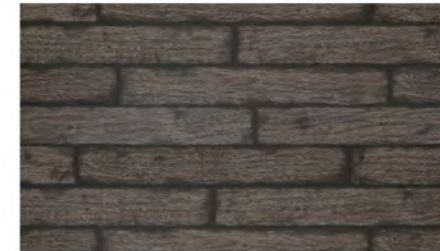
There's no substitute for the best !



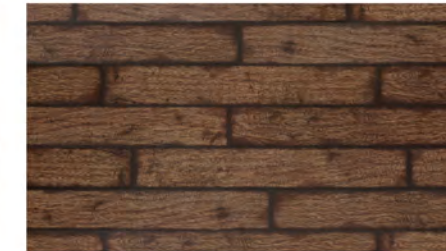
True Spirit



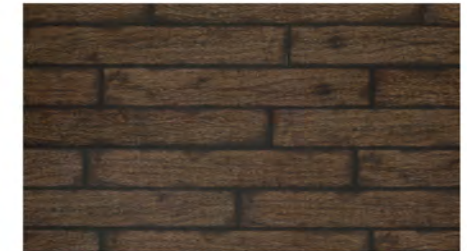
GWR 019 Oak - Dark brown smoked



GWR 020
Oak - Indium grey smoked



GWR 018
Oak - Cognac smoked



GWR 017
Oak - Pure brown smoked



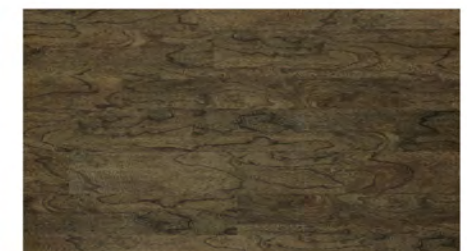
GWR 023 Walnut - cognac brown



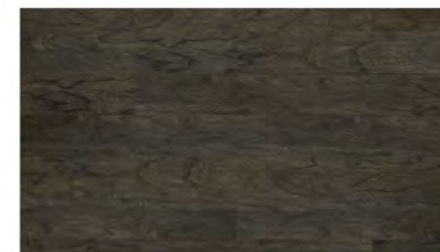
GWR 025
Walnut - Pearl white



GWR 022
Walnut - Contemporary brown



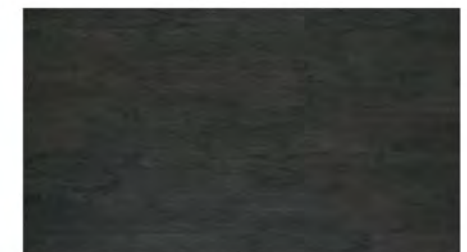
GWR 023
Walnut - Cognac brown



GWR 021
Walnut - Genuine brown



GWR 024
Walnut - Medium brown



GWR 026
Walnut - Deep brown



GWR 013
Oak - Misty white



GWR 002
Oak - Light grey



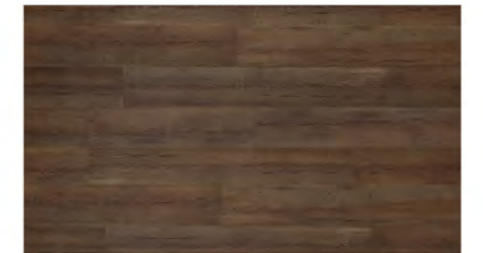
GWR 010
Oak - Barn brown



GWR 003
Oak - Aged brown



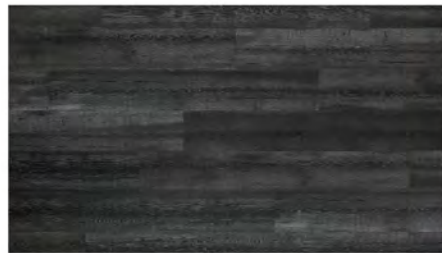
GWR 016
Oak - Red brown



GWR 015
Oak - Cognac brown



GWR 009
Oak - Earth brown



GWR 008
Oak - Charcoal grey



GWR 001
Oak - Fieldcorn brown



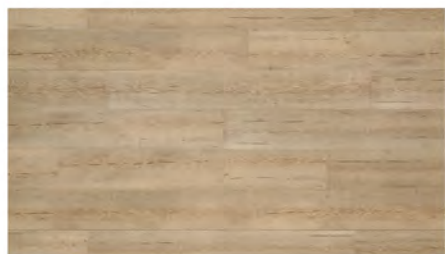
GWR 005
Oak - Original brown



GWR 006
Oak - Medium brown



GWR 014
Oak - Dark brown



GWR 004
Oak - Earth yellow



GWR 012
Oak - Umber brown



GWR 007
Oak - Raw umber



Nature Living

1219.2 x 228.6 x 2.0 mm / 0.3 mm

Pure, genuine, sturdy and harmony are just a few of the emotions that characterize the Nature Living collection. Entirely inspired by nature, this collection provides you subtle original wood designs in honest natural colors.

The robust plank size with lifelike natural surface structure provides the opportunity to create an atmosphere of originality, warmth and cosiness in your home. On the other hand, the Nature Living designs can also perfectly contribute to a slightly more industrial interior style in which all basic materials like stone, steel and of course wood are blended together.

According to official European standards, these products are suitable for intensive use (class 23) in your home and are even suitable for light use (class 31) in projects. Guaranteed carefree use is warranted!

Your way of living!



Nature Living



GW 312

Oak - Stylish Light



GW 313

Oak - Warm Grey



GW 314

Oak - Joyful Spring



GW 303

Oak select - Fresh timber



GW 311

Oak - Pure Essence



GW 302

Oak select - True Nature



GW 305

Oak privilege - Warm grey



GW 300

Oak authentic - Earth Brown



GW 306

Oak privilege - Beige taupe



GW 318

Oak - Barn Brown

Tierra Nueva

457.2 x 457.2 x 2.5 mm / 0.55 mm

Mediterranean interior design embodies the feeling of Europe's southern coast. This area has a distinctly relaxed, inviting atmosphere that is reflected in the design style with its colorful touches.

Mediterranean interiors pursue a truly carefree and casual feeling by bringing as much of the vibrant landscape and the warm sunlight into the interior as possible and are featuring in general wonderful tile designs on floors.

The Green-Flor® Tierra Nueva Collection is therefore a perfect reflection of this Mediterranean spirit. Inspired by centuries-old Spanish tile designs, our Tierra Nueva design is skillfully created and adapted to the most up to date and latest trends in interior designs.

The Tierra Nueva Collection brings a balanced choice of colors. Next to essential color tones black and white, colors are derived from the sea and sky and can equally include beautiful earth tones like terra cotta.

From sunrise to sunset, relax and enjoy !

Tierra Nueva and Master trend combined



Tierra Nueva



GTS 807

Luna Grey



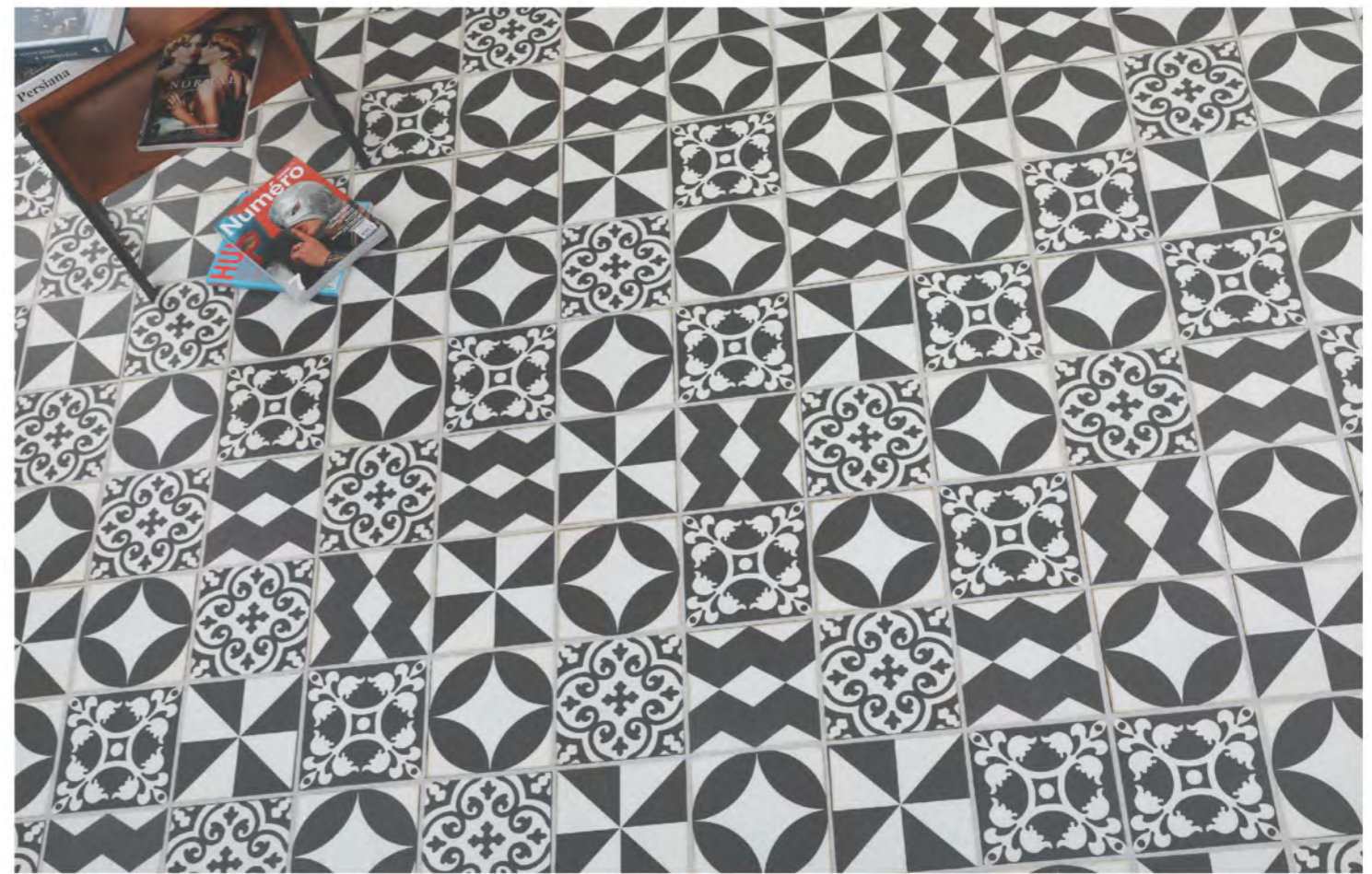
GTS 803

Sky Blue



GTS 806

Indium Grey



GTS 801

Nocturne Black



GTS 802

Azure Blue



GTS 805

Terra Red



Prime Inspiration

914.4 x 457.2 x 2.5 mm / 0.55 mm

Stone has a natural charm and represents the connection of nature with earth. It creates a sense of calm and grounding. It does not lose its appeal in time and merges elegance and functionality in every interior design. You can find natural stone in an incredible range of types, colors and patterns. Slate is a metamorphic rock that is dense, strong, stain resistant and non-absorbent. The most exclusive and fine quality slate is found underground and needs to be mined and is therefore premium priced. The Prime Inspiration Collection is therefore a more accessible and excellent range covering all these material characteristics ! Color wise, slate stone is determined by the minerals it contains. Red slate is caused by hematite, green by chlorite, blue-gray by sericite, black by carbonaceous materials and yellowish-brown by limonite. The Prime Inspiration Collection selected the most natural balanced colors from warm grey to deep earth brown. Combined with its robust size it will ultimately contribute to the desired atmosphere in your interior. Prime Inspiration, slate of the art !



Prime Inspiration



GT 862

Natural slate - light grey



GT 861

Natural slate - earth brown



GT 865

Natural slate - graphite grey



GT 863

Natural slate - indium grey



GT 864

Natural slate - umber brown



GT 867

Natural slate - charcoal grey



GT 866

Natural slate - dark argil



GT 863 Natural slate - indium grey

Stylish Grid

914.4 x 457.2 x 2.5 mm / 0.55 mm

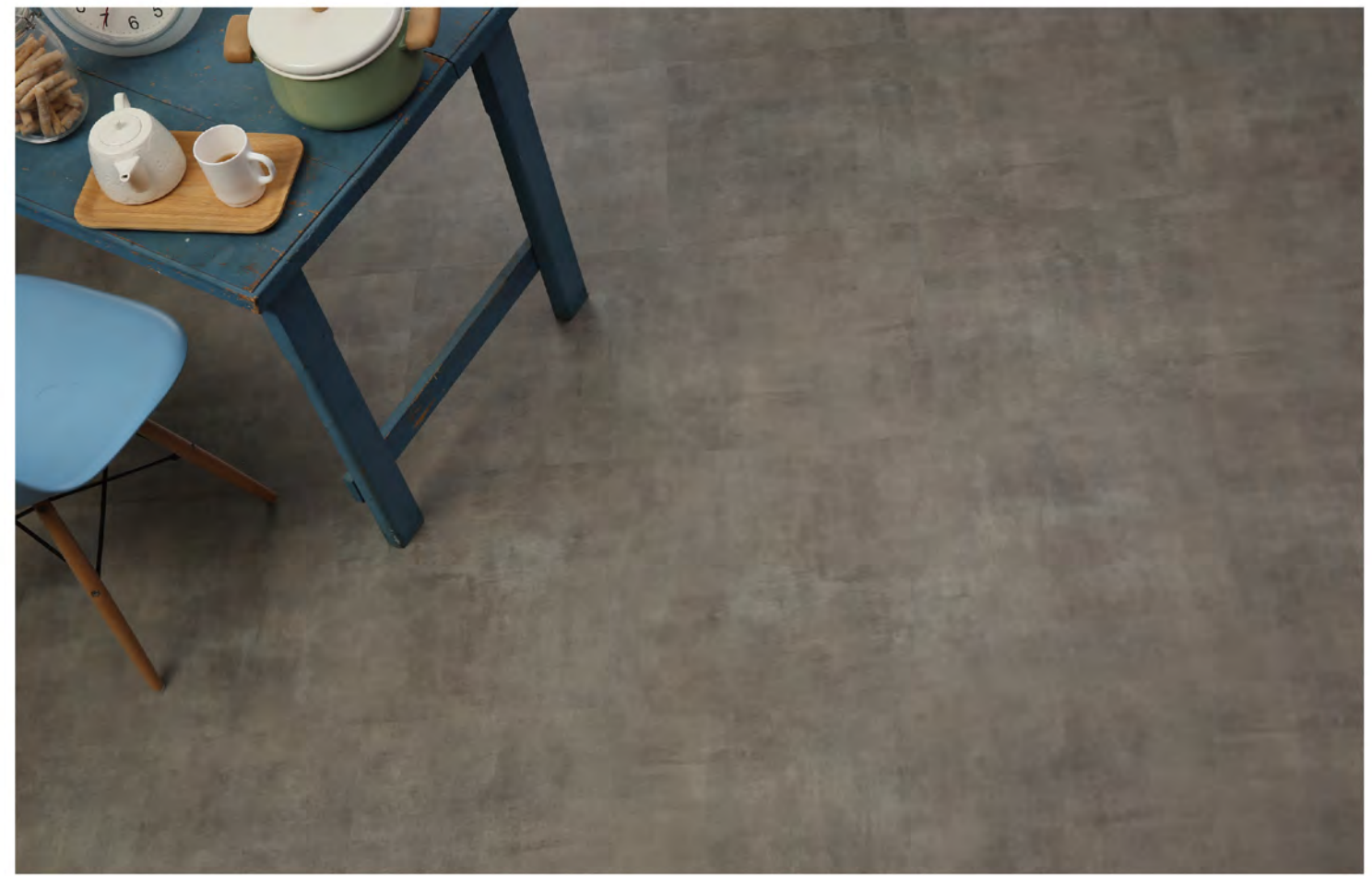
Stone floorings and designs are magnificent and empower a room with a statement of grandeur.

Next to a feeling of luxury, it also brings a raw power in design whilst conserving a stylish touch of genuine natural elegance. Combinable with all kinds of furniture, decorations and accessories, it is fit for any style and generation! If applied with a sense of creativity and design in a successive and comfortable pattern, this new and bigger special sized rectangular tile with amazing new designs and colors, will provide this unprecedented natural touch in your interior design.

Stylish Grid, stone with character!

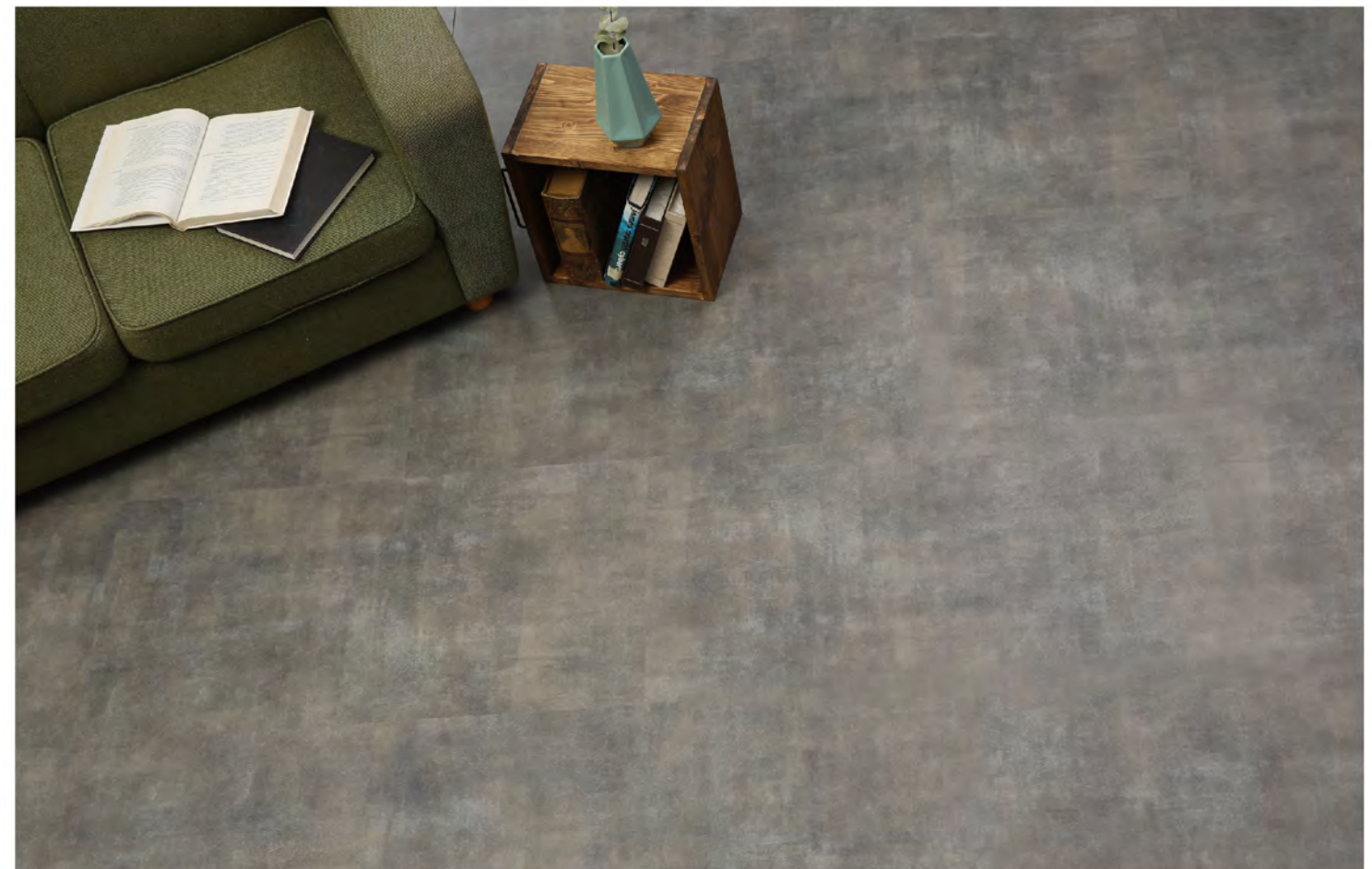


Stylish Grid



GT 495

Concrete - Cement Light Grey



GT 494

Concrete - Cement Medium Grey



GT 493

Mineral - Talc Taupe



GT 491

Mineral - Onyx Black



GT 492

Mineral - Terra Brown



GT 487

Limestone - Natural Beige



GT 488

Limestone - Warm Grey



GT 496

Breccia Marble - Natural



GT 489

Limestone - Raw Umber



GT 497

Breccia Marble - Graphite



New Square & New Square Piazza

600 x 600 x 2.5 mm / 0.55 mm

914.4 x 914.4 x 2.5 mm / 0.55 mm

From origin, Squares & Piazzas are the communities' central places and most meaningful spaces where people are gathering. The New Square & New Square Piazza Collection will just perfectly fulfill this same function in your interior! The unique natural color gradation in the subtle designs of the New Square & New Square Piazza Collection emphasizes that stone is a truly timeless material, yet totally in the core of the last interior trends. This amazing material, fit for home improvements and commercial designs utterly contributes to a high class atmosphere in every space. The tile is beautifully smooth, extremely wear-resistant and is very easy to clean whilst conserving a feel and touch which is warm and comfortable. This unique tile design furthermore distinguishes itself by two available robust sizes; The New Square in 60 x 60 cm and the New Square Piazza which can be made to order in 91.44 x 91.44 cm. The exclusivity you are looking for !



New Square & New Square Piazza



GT 606

Concrete - light brown



GT 603 / GT 903

Concrete - umber brown



GT 602 / GT 902

Concrete - dark brown



GT 605 / GT 905

Concrete - indium grey



GT 601 / GT 901

Concrete - charcoal grey



GT 604 / GT 904

Concrete - graphite grey



GT 607 / GT 907

Concrete - light grey



GT 604 / GT 904 Concrete - graphite grey



Pure & Powerful

457.2 x 457.2 x 2.5 mm / 0.55 mm

Pure & Powerful is a surprising collection of fresh uni-color tones. In a smooth surface structure or with e.g. tred plate embossing, you are able to create a unique atmosphere; from hyper modern to industrial vintage. The version with the sparkling inlays gives even a virtual 3D effect to the floor which fascinates your eye. From children bedroom, kitchen, kindergarden, canteen or reception, this floor offers you a great possibility to set your own accents and follow your creative interior concepts.

Pure & Powerful !



GU 01



GC 01



GM 01



GU 02



GC 02



GM 02



GU 03



GC 03



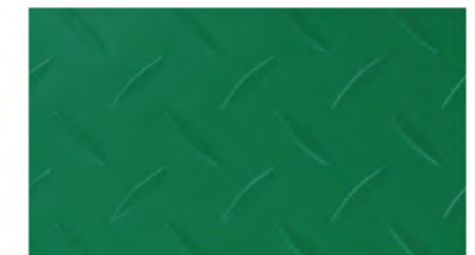
GM 03



GU 04



GC 04



GM 04



GU 05



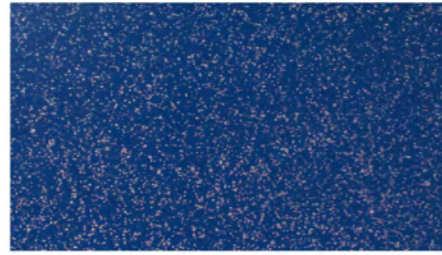
GC 05



GM 05



GU 06



GC 06



GM 06



GU 07



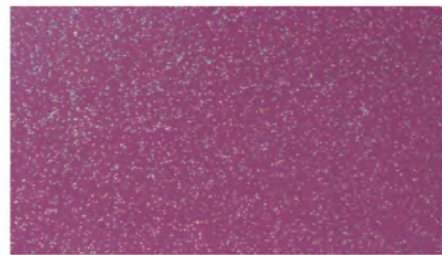
GC 07



GM 07



GU 08



GC 08



GM 08



GU 09



GC 09



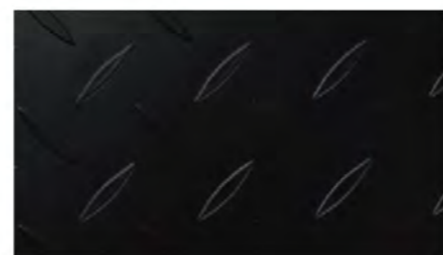
GM 09



GU 10



GC 10



GM 10





Performance 70

457.2 x 457.2 x 5 mm / 0.7 mm
1219.2 x 228.6 x 5 mm / 0.7 mm

PERFORMANCE 70 is a modular resilient flooring developed specifically for heavy-traffic areas. This loose-lay flooring, is quick and easy to install with no need for permanent glue or hot welding. Tiles or planks can be replaced or removed and re-installed without damage to the sub- or original hard flooring below and does not leave any residues, being interesting for both owner and tenant in commercial or residential-housing spaces.

PERFORMANCE 70 in projects is not only an ideal and extra efficient alternative for retail areas, hotels or offices and buildings where quick installation is a must, but also ultimately fit for any office where there are raised floors with frequent access required to cables and pipes. The collection provides you a balanced design- and color pallet for the plank and a unique natural color gradation in the subtle designs of the tile. Both enhanced with a surface texture generating the distinctive and original natural appearance. Together with the subtle v-groove on 4 sides, it utterly contributes to a high class atmosphere in every space.

The metamorphosis of your interior will be swift and sure!

■ 4 sides bevel

LOOSE LAY



Performance 70



PE 70406

Concrete original light brown



PE 70403

Concrete original umber brown



PE 70405

Concrete original indium grey



PE 70407

Marble almond beige



PE 70404

Concrete original graphite grey



PE 70401

Concrete original charcoal grey



PE 70409

Marble pewter grey



PE 70049

Pine fieldcorn brown



PE 70408

Marble charcoal grey



PE 70058

Oak light brown



PE 70053

Oak almond brown



PE 70059

Oak contemporary indium grey



PE 70048

Pine barn brown



PE 70046

Oak pewter grey



PE 70057

Oak contemporary indium graphite grey



PE 70049 Pine fieldcorn brown

Performance 70 XL & XXL

1422.4 x 228.6 x 5 mm / 0.7 mm | 914.4 x 457.2 x 5 mm / 0.7 mm | 914.4 x 914.4 x 5 mm / 0.7 mm

PERFORMANCE 70 XL & XXL is a modular resilient flooring developed specifically for heavy-traffic areas. This loose-lay flooring, is quick and easy to install with no need for permanent glue or hot welding. Tiles or planks can be replaced or removed and re-installed without damage to the sub- or original hard flooring below and does not leave any residues, being interesting for both owner and tenant in commercial or residential-housing spaces. PERFORMANCE 70 XL & XXL in projects is not only an ideal and extra efficient alternative for retail areas, hotels or offices and buildings where quick installation is a must, but also ultimately fit for any office where there are raised floors with frequent access required to cables and pipes.

The Performance 70 XL & XXL Collection provides you a balanced design- and color pallet for the plank and a unique natural color gradation in the subtle designs of the tile. Both enhanced with a surface texture generating the distinctive and original natural appearance. Together with the subtle v-groove on 4 sides, it utterly contributes to a high class atmosphere in every space.

The metamorphosis of your interior will be swift and sure!

■ 4 sides bevel



Performance 70 XL & XXL



PE70XL 834

Oak original grey



PE70XL 832

Oak original serene greige



PE70XL 831

Oak original timeless tan



PE70XL 405

Concrete indium grey



PE70XL 833

Nordic - creek beige



PE70XL 401

Concrete charcoal grey



PE70XL 410

Concrete cement umber brown



PE70XXL 901

Concrete original charcoal grey



PE70XL 412

Concrete cement medium grey



PE70XXL 904

Concrete original graphite grey



CLICK

Nature Fit 30 Stark 1219.2 x 228.6 x 4 mm / 0.3 mm

In all of its unique characteristics and designs, the Nature Fit 30-Stark collection is entirely inspired by the traditional best wood floorings. Being more hygienic than the original wooden floorings and having a soft underfoot with a lower perceived walking sound compared to the laminate floorings, this unique Green-Flor® product is greatly fit for applications in e.g. children-, living-, reading- and study rooms but also your office. Moisture resistant and essentially waterproof with a R10 rated slip resistance, makes the floor on top of it also very suitable for those places where barefoot walking is desirable. The wear layer with the special Top Protection Plus – TPP coating, provides extra scratch resistance and protection against stains, making this easy and low maintenance product into an ultimate lasting product. This equally allows it to keep its original genuine appearance considerably better than the real wooden products. The uniquely designed and ultimate dimension stable Green-Flor® products are having the precision engineered I4F click system providing a reliable strong glue-free and easy to install, angle-system for the long side combined with drop-lock system for the short side of the plank. This enables a convenient installation over many different subfloor surfaces in which the planks are not adhered to the subfloor and therefore do not need drying time, making your floor immediately usable. Comfort, safety but above all a relish for the eye!



Nature Fit 30 Stark



GWC 2515

Oak - original terra brown



GWC 2504

Oak - original satin white



GWC 2505

Oak - original subtle brown



GWC 2506

Oak - rustic authentic brown



GWC 2503

Oak - original wood brown



GWC 2510

Oak - gothic dark brown



GWC 2509

Oak - contemporary cool brown



GWC 2508

Oak - original taupe



GWC 2507

Oak - original fieldcorn brown



GWC 2501

Oak - crafted raw umber



GWC 2502

Oak - crafted earth brown



GWC 2514

Oak - original beige gris



GWC 2511

Oak - original light brown



GWC 2512

Oak - original umber brown



GWC 2513

Oak - contemporary black pearl



GWC 2503 Oak - original wood brown



Design Strip

914 x 3 x 2.5 mm / 0.55 mm

Design Strips are an enriching accessory for your floor.

Your natural and authentic floor will get that extra bit of character and class and also allows you to integrate your own creative ideas ; a boat deck effect in your wooden floor or creating for instance a stylish design with border strip in an attractive color accent.



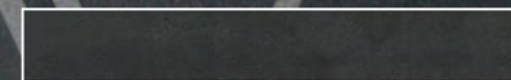
GA 03601



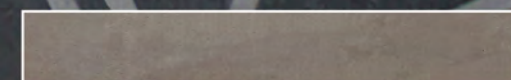
GA 03607

Available

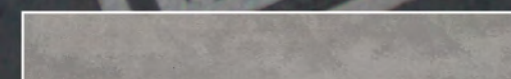
2.5 mm total thickness / 0.55 mm wear layer
Size of 1 strip : 914 x 3mm (L x W)



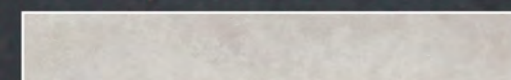
GA 03601



GA 03603



GA 03605



GA 03607



3 mm

Datasheet / Glue Down / Loose Lay

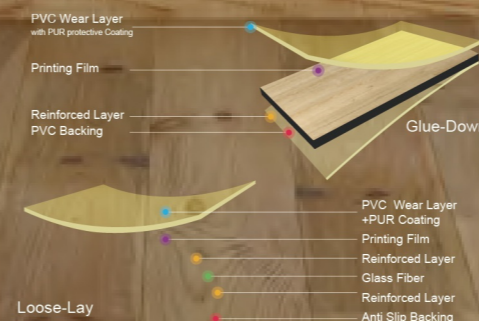
Product specifications	Standard Requirement	Test results				
		Pass	Glue Down		Loose Lay	
Total thickness	EN ISO 24346	-	✓	2.0mm	2.5mm	5.0mm
Thickness of wear layer	EN ISO 24340	-	✓	0.3mm	0.55mm	0.70mm
Weight	EN ISO 23997	-	✓	3.5kg/m ²	4.4kg/m ²	9.1kg/m ²
Classification & Certification						
Type of flooring	EN ISO 10582	Heterogeneous, PVC	✓	-		
Classification	EN ISO 10874	22/33/42 , 31/34/43	✓	23 / 31	33 / 42	34 / 43
Burning behaviour	EN 13501-1/ EN ISO 9239-1/ 11925-2 EN 14041: 2004/AC:2006	Bfl-s1	✓	Bfl-s1		
Slip resistance	DIN 51130/ EN 13893 EN 14041: 2004/AC:2006	R9, DS	✓	R9, DS		
Technical properties						
Abrasion resistance	EN ISO 10582	Class T	✓	Class T		
Dimension stability	EN ISO 23999	Glue Down ≤ 0.25% Loose Lay ≤ 0.25%	✓	< 0.05 %		
Squareness & straightness	EN ISO 24342	< 0.35 mm toleranz	✓	< 0.20mm		
Curling after exposure to heat	EN ISO 23999	< 2 mm	✓	0mm		
Residual indentation	EN ISO 24343-1	< 0.1 mm	✓	0.08mm	0.05mm	0.08mm
Castor wheel chair	ISO 4918	25,000 revolutions	✓	suitable, type W		
Flexibility	EN ISO 24344	20 mm no crack	✓	< 10 mm no crack		
Surface treatment	-	-	-	Top Protection Plus, PUR		
Color fastness	EN ISO 105-B02	≥ 6	✓	> 6		
Staining & resistance to chemicals <small>Caustic soda solution (25%), Citric acid (10%), Acetone, Coffee (120g/l)</small>	EN ISO 26987	-	✓	Index 0, excellent		
Thermal resistance	EN ISO 8302	0.01m ² K/W	✓	0.01m ² KW 0.019m ² KW 0.018m ² KW		
Underfloor heating	-	-	✓	suitable, max. 27°C		
Environment / Indoor air quality						
Formaldehyde emissions	EN 14041: 2004/AC:2006	-	✓			
Pentachlorophenol content	EN 14041: 2004/AC:2006	-	✓			
TVOC after 28 days	ISO 16000	-	✓	certified A+ (ÖTI report No. 71745,71995)		
REACH	Regulation (EU) No. 1907/2006	in conformity	✓	no SVHC (Centexbel report No.14.01560.02, 13.03928.01)		

Product names	Size	Content Carton	Product names	Size	Content Carton
Grand Class Solid Essence	1422.4 x 228.6 x 2.5 / 0.55mm	3.25m ²	Prime Inspiration Stylish Grid	914.4 x 457.2 x 2.5 / 0.55mm	3.34m ²
Modern Vintage Modern Vintage Chic	304.8 x 76.2 x 2.5 / 0.55mm 720 x 144 x 2.5 / 0.55mm	3.34m ² 3.32m ²	New Square New Square Piazza	600 x 600 x 2.5 / 0.55mm 914.4 x 914.4 x 2.5 / 0.55mm	3.24m ² 5.01m ²
Master Trend Master Trend Collection	1219.2 x 228.6 x 2.5 / 0.55mm	3.34m ²	Performance 70 - Tile Performance 70 - Plank	457.2 x 457.2 x 5.0 / 0.7mm 1219.2 x 228.6 x 5.0 / 0.7mm	1.67m ² 2.23m ²
True Spirit	1219.2 x 184.1 x 2.5 / 0.55mm	3.37m ²	Performance 70 XL - Tile Performance 70 XXL - Tile	914.4 x 457.2 x 5.0 / 0.7mm 914.4 x 914.4 x 5.0 / 0.7mm	2.51m ² 2.50m ²
Nature Living	1219.2 x 228.6 x 2.0 / 0.3mm	3.34m ²	Performance 70 XL - Plank	1422.4 x 228.6 x 5.0 / 0.7mm	1.95m ²
Tierra Nueva Pure & Powerful	457.2 x 457.2 x 2.5 / 0.55mm	3.34m ²	Nature Fit 30 Stark	1219.2 x 228.6 x 4.0 / 0.3mm	2.68m ²

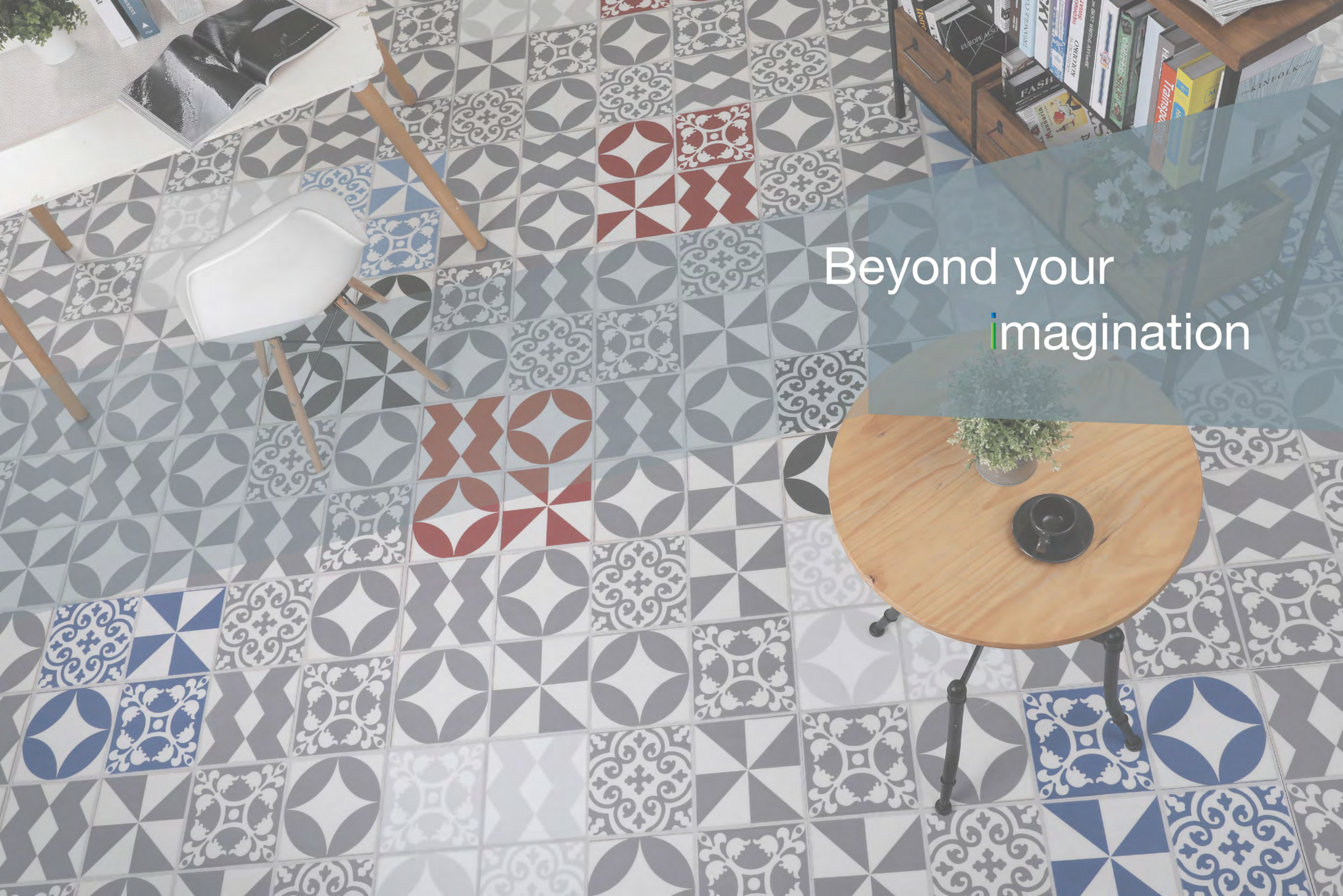


Datasheet / Click Plank

Technical characteristics	Standard Requirement	Test results	
		Pass	
Total thickness	EN 428, EN ISO 24346	4.0mm	✓ -
Wearlayer	EN 429, EN ISO 24340	0.30mm	✓ -
Weight	EN 430, EN ISO 23997	7.28kg/m ²	✓ -
Click system	EN 429, EN ISO 24340	0.30mm	✓ I4F, 3L TripleLock - drop-lock fall down system short side Click4U - angle-system for the long side
Surface treatment	-	-	✓ Top Protection Plus PUR super matt top protection coating
Dimensions & packaging	EN 427, EN ISO 24342	-	✓ Planks 228.6 x 1219.2 mm (9 x 48 inch) or 221.4 x 1212 mm - effective floor size Carton with 8 planks = 2.23 m ²
Classification & Certification			
Type of flooring	EN 649, EN ISO 10582	Heterogeneous, PVC	✓ -
European classification	EN 685, EN ISO 10874	23/ 33/ 42, 31/ 34/ 44	✓ 23 / 31
Fire resistance	EN 13501-1/ EN ISO 9239-1/ 11925-2 EN 14041: 2004/AC:2006	Bfl-s1 , class 1	✓ Bfl-s1
Electrostatical properties	EN 1815	< 2KV	✓ - 1,6 KV, Anitstatic
Slip resistance	EN 13893/ DIN 51130/ EN 14041: 2004/AC:2006	R9, DS	✓ R10, DS
Technical performance			
Abrasion resistance	EN 660-2, ASTM F 510	Class T, ≤ 2.0mm132	✓ Class T
Dimension stability Curling	EN 434, EN ISO 23999 EN 434, EN ISO 23999	Shrinkage ≤ 0.15 %, ≤ 2 mm	✓ 0.05% and 0.00% 0mm
Side length, squareness and straightness	EN 427, EN ISO 24342	< 0.35 mm variation	✓ < 0.20 mm
Flatness	prEN ISO 10582 Annex B	long side convex / concave ≤0.50% / ≤1.00% short side convex / concave ≤0.10% / ≤0.15%	✓ long side convex / concave none / -0.01% short side convex / concave 0.05% / -0.05%
Width of joint and difference in height of joined elements	prEN ISO 10582 Annex C.	width joint : Avg.≤ 0.15 mm, Ind.values ≤0.20mm diff. height: Avg.≤ 0.10 mm, Ind. values ≤0.15mm	✓ width joint : Avg. 0.00 mm Ind.values ≤0.00mm diff.height: Avg.0.10 mm Ind.values ≤0.15mm
Determination of interlocking system strength	prEN ISO 10582 Annex D	1.50 kN/m	✓ long side 2.28 kN/m short side 2.21 kN/
Residual indentation	EN 433, EN ISO 24343-1	< 0.1mm	✓ 0.08mm
Castor wheel chair	EN 425, ISO 4918	suitable	✓ After 100,000 cycles,no damage of surface
Flexibility	EN 435-A, EN ISO 24344-A	20 mm no crack	✓ None
Color fastness	EN ISO 105-B02	≥ 6	✓ 6
Chemical resistance	EN 423, EN ISO 26987	class 0	✓ class 0, not changed
Termal resistance	EN 12667, EN ISO 8302	0.019 m ² K/W	✓ 0.015 m ² K/W
Underfloor heating	EN 1264-2	-	✓ Max. 28°C
Environment & indoor air quality			
Emissions formaldehyde	EN 14041: 2004/AC:2006	E1	✓
Content pentachlorophenol	EN 14041: 2004/AC:2006	no use	✓
Emission Test TVOC after 28 days	ISO 16000	A+ < 1000 µg/m ³	✓ A+: 11.8 µg/m ³ (rapport Eurofins n° EFSN16062029C-V) Floor Score
Reach Regulation	Regulation (EU) No 1907/2006 - 1272/2013	comply	✓ Compliant (rapport SGS n° 160600880)



Use	Product Specification	User Class
Residential only	2 mm total thickness 0.2 mm wear layers	Class 22
Residential Light commercial with moderate foot traffic (e.g. Hotel room, Conference room, & Small offices)	2.0/ 4.0 mm total thickness 0.3 mm wear layers	Class 23 Class 31
Commercial areas with heavy traffic (e.g. Retail outlets, Boutiques, Open plan offices, Care homes, Healthcare establishments, School & Colleges)	2.5/ 4.0/ 5.0 mm total thickness 0.55 mm wear layers	Class 33 Class 42
Commercial areas intensive use with very heavy traffic (Departments stores, Retail outlets, heavily used Multipurpose halls and Airports) Light Industrial areas with any traffic Production halls & Storage rooms	2.5/ 4.0/ 5.0 mm total thickness 0.7 mm wear layers	Class 34 Class 43



Beyond your
imagination

General Information

For optimal esthetics and longevity of the Green-Flor® modular resilient flooring, a basic set of requirements must be met. In the first place, during transport and storage, ensure that the cartons are flat and uniformly stacked. Prior to the installation at site, the cartons should again be stored flat and the products should be acclimatized in the relevant space for 24 hours at room temperature between 15 and 26 °C. This temperature must equally be maintained for 24 hours after the installation is completed. The relative humidity in the room should not exceed 70%. At the start and during installation, the product should be checked for quality, color, design, etc. This also will ensure that in large and/or connecting rooms the same batch number is applied. After installation, the floor should be rolled with a three-segment 70kg roller for optimum adhesion and adhesive distribution. For glue, common dispersion glue is recommended. An adhesive advice can be found with your local adhesive supplier. Avoid during laying, direct sunlight on your adhesive. During and at least 24 hours after installation, there may be no traffic on the floor and no furniture may be placed. The floor should not be exposed to water in the first 48 hours.

Subfloor

The Green-Flor® modular resilient flooring can be installed on various surfaces, provided that certain conditions are met. The surface must be flat, dry, smooth, clean, hard, firm and free of cracks, joints and other irregularities. The substrate should not be contaminated with paint, oil, grease, gypsum, or other substances which may have an influence on the adhesion of the floor. The flatness and drought are to be measured with the aid of suitable equipment and should be in accordance with the relevant standards in the respective country. Never install the products over the so-called expansion joints of the building without additional measures. Think about the possibility of using special profiles for this.

Floor heating- and cooling

The heating or cooling should be turned off 48 hours before the subfloor preparation takes place and remain off until at least 48 hours after the installation is completed. This in view of heating or condensation that may affect the bonding process of the glue. To again turn on the heating or cooling, the temperature can be changed in 5 ~ 7 days, with only a few degrees per day until the desired temperature is reached.

Maintenance

The Green-Flor® modular resilient flooring with the Top Protection Plus system have a PUR protection and are thus highly resistant to dirt, stains and wear. Nevertheless Green-Flor® modular resilient flooring also needs to be cleaned regularly. How often and how is dependent on the place where the floor is, and the degree to which it is being used. Regular maintenance keeps the floor not only more beautiful and hygienic, it is also has a direct impact on the life time of your floor.

Preventive care and prevention of damage

Applying a good entrance mat or matting, largely prevents the ingress of dirt and moisture into the building and consequently onto your floor. It must be sized in such a way that walking on it is inevitable, and must have at least the length of a few steps. Do not use a rubber, in combination with the floor. Migration can lead to a permanent dark brown discoloration. Provide chair legs and other furniture from additional protection in order to protect your floor. Browse to www.scratchnomore.com

for the best protection of your floor. Do not slide heavy objects across the floor. If necessary, replace the wheels under office chairs with wheels with double support rollers of type W (soft)

Daily maintenance

Use a vacuum cleaner or a dust mop to remove dust and dirt. Use a damp mop or cloth with a neutral detergent to remove 'stubborn' dirt better. It is recommended to use a separate 'rinse-bucket' for optimum results. Depending on the situation mechanical maintenance can bring an even better result if necessary.

Periodic maintenance

Depending on the intensity of use, the amount of dirt that is walked in and the way the daily maintenance is performed, and especially in big public projects, a scrub-suck machine with neutral detergent and equipped with a suitable red pad or a dry buffing high speed machine at 900 rpm with white pad, will yield a better result.

INSTALLATION INSTRUCTIONS AND MAINTENANCE

Installation instructions

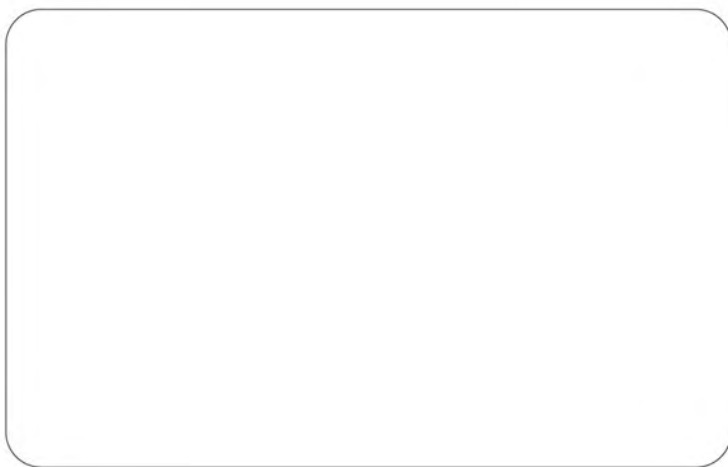




EN14041 : 2004



*Information sur le niveau d'émission de substances volatiles dans l'air intérieur, présentant un risque de toxicité par inhalation, sur une échelle allant de A+ (très faibles émissions) à C (fortes émissions)
*ISO 16000/AFFSET



info@green-flor.com | www.green-flor.com

THE INFORMATION IN THIS BROCHURE IS NOT CONTRACTUAL AND SUBJECT TO MODIFICATION WITHOUT PRIOR NOTICE, FOR THE BENEFIT OF FURTHER IMPROVEMENT OF OUR PRODUCTS AND SERVICES. NO RIGHTS CAN BE DERIVED FROM THE PRESENTED DESIGNS AND COLOURS IN THIS BROCHURE. ALL CONTENT, IMAGES AND DESIGNS ARE OWNED BY G.T. FLOOR CO.LTD. NOTHING IN THIS PUBLICATION MAY BE REPRODUCED AND / OR PUBLISHED BY MEANS OF PRINTING, OFFSET, PHOTOCOPY OR MICROFILM OR IN ANY DIGITAL, ELECTRONIC, OPTICAL OR OTHER FORM, WITHOUT EXPRESS WRITTEN PERMISSION BY G.T. FLOOR CO.LTD.
12252018 / EN