



HARVEY MARIA

FABULOUS FLOORS



INSPIRATIONAL FLOORING FOR A HOME LESS ORDINARY

We believe that beautiful flooring is at the heart of great interior design, so I hope you'll be inspired by our Signature Collection. Contemporary and perfectly balanced, it's been created to bring warmth and style to your home.

Alongside authentic wood designs and timeless colours, the collection incorporates the work of some of Britain's best-loved designers. This year we're delighted to introduce Check, an exclusive new collection from award-winning textiles artist Neisha Crosland.

We love to hear from you, so our design team are always on hand to offer advice and discuss your ideas in more detail. Your approved Harvey Maria flooring retailer can also offer additional help, along with an expert fitting service.

We hope we can help you find your fabulous floor, and we look forward to hearing from you soon!

Mark Findlay
Founder



Premium Wood	8
Check	10
Parquet	12
Lattice	14
Spot & Rose Sprig	16
Little Bricks	18
Other Collections	20

Cover: Antique Oak with Lattice Hay Field
Left: Little Bricks Bay Blue, Forget-Me-Not and Steel

A LITTLE BIT MORE ABOUT HARVEY MARIA

Back in 1994, floors were neglected spaces. Trampled on and overlooked, many considered them an afterthought, but we set out to create something new and vibrant. We wanted to wave goodbye to boring flooring, and replace it with something that would breathe new life into rooms all over the home.

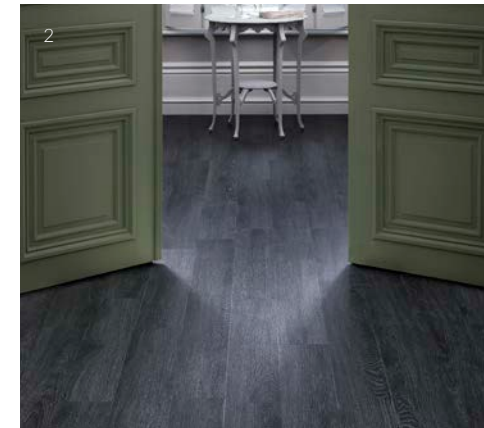
We began in the back bedroom of a house in Battersea together with a loveable, live-wire dog called Harvey. And, as you've probably guessed, it was Harvey who gave the company its name. Our quirky floor tiles quickly established Harvey Maria's reputation for individual and innovative design, with loyal customers travelling to the house to collect their new floors.

It's fair to say that we've moved on a bit since those days, with people all over the world choosing Harvey Maria flooring for their homes. You're also equally likely to see one of our designs gracing the interior of shops, restaurants and boutique hotels. Our exclusive designer collaborations have added a little extra glamour to our collection, and we're lucky enough to be working with some of the biggest names in British design.

Of course, there's no better endorsement than the wonderful photos you send us every day. So much of our inspiration comes from your real homes, and we showcase a selection on our Customer Floor Gallery. We've always said that floors should take centre stage, and you've really shown us how.

Let's hear it for beautiful floors everywhere!

1. Lattice Hellebore with Sawn Oak
2. Lamp Wood
3. Parquet Stone
4. Check Flint
5. Lattice Pebble Grey
6. Church Pine



OUR GUEST DESIGNERS

As well as our own unique collections, we work closely with some of Britain's best-loved designers, bringing you an inspirational assortment of classic and contemporary patterns.

- 1. Check Flint
- 2. Spot Prussian Blue
- 3. Rose Sprig White
- 4. Lattice Pebble Grey with Little Bricks Steel

NEISHA CROSLAND

Award-winning textile artist Neisha Crosland takes inspiration from shapes found in nature, using them to create her trademark oversized graphics and symmetrical geometric motifs.



Cath Kidston®

Inspired by growing up in the British countryside and a love of vintage prints, Cath Kidston opened her first shop in West London in 1993. More than 20 years later, Cath Kidston is the home of Modern Vintage, designing pretty, colourful prints that turn modern products into something witty, fresh and fun.



Dee Hardwicke

Mixed-media artist Dee Hardwicke is endlessly inspired by the natural landscape, with each season bringing a fresh palette of colours, patterns, textures, and exciting new ideas.

PREMIUM WOOD

Our beautifully detailed Premium Wood collection is available in a stunning range of finishes and tones. With an incredibly realistic and hard-wearing finish, each design boasts supreme practicality without ever compromising on style.



Lamp Wood



Walnut



Antique Oak



Church Pine



Pear Tree



Pecan



Reclaimed Pine



Sawn Oak



County Oak



Scrubbed Pecan

PREMIUM WOOD
15.2cm x 91.4cm
Wear layer: 0.7mm



1. Sawn Oak styled by Jo Bailey for Romo Fabrics
2&3. Church Pine



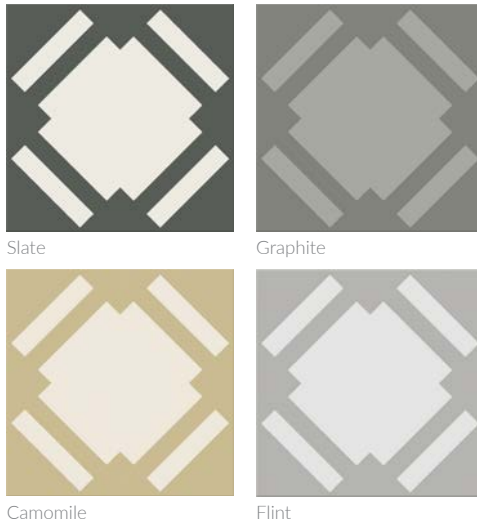
NEW



CHECK by NEISHA CROSLAND

Introducing Check, the new collection from British textile artist Neisha Crosland. Drawing inspiration from classic flooring design, Check features a bold symmetrical print which, when laid, cleverly transforms into a distinctive diamond motif.

The timeless pattern is reminiscent of period architecture, bringing contemporary elegance to even the most demanding rooms of your home.



CHECK
30.5cm x 30.5cm



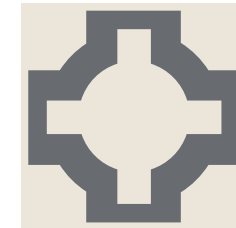
- 1. Check Flint
- 2. Check Slate
- 3. Check Camomile





PARQUET by NEISHA CROSLAND

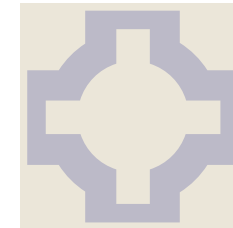
Neisha's award-winning Parquet design was her first collaboration with Harvey Maria, and is now a firm favourite with architects and interior designers worldwide. With its Celtic-inspired motif, this striking geometric pattern is a perfect blend of classic and contemporary design.



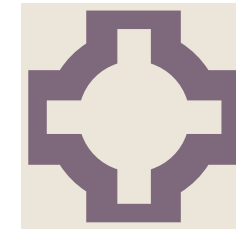
Charcoal



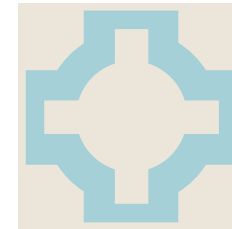
Stone



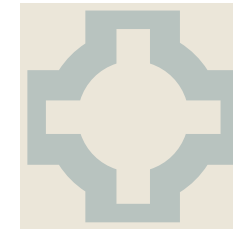
Thistle Grey



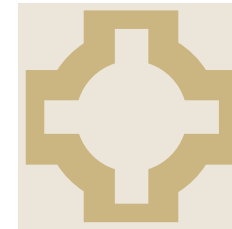
Heather



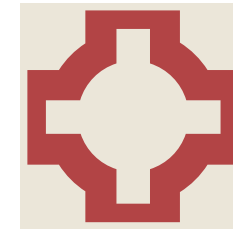
Sky Blue



Eggshell



Mimosa



Red Oxide

PARQUET
30.5cm x 30.5cm



1. Parquet Charcoal with Lamp Wood
2. Parquet Red Oxide
3. Parquet Eggshell with Little Bricks Steel



LATTICE by DEE HARDWICKE

Inspired by the rhythmic delicacy of scattered petals, Lattice by Dee Hardwicke replicates her hand-painted style in a palette of organic shades. This versatile pattern complements a range of décor, adding character and charm to any room of your home.



Pebble Grey

Hay Field

Pear Tree Green

Cornflower Blue

Hellebore

Cherry Red

LATTICE
30.5cm x 30.5cm



1. Lattice Hellebore with Sawn Oak
2. Lattice Pebble Grey
3. Lattice Pear Tree Green with Reclaimed Pine





SPOT & ROSE SPRIG by CATH KIDSTON

Spot and Rose Sprig are amongst Cath Kidston's most iconic designs, and our exclusive collection is the perfect way to add a touch of loveliness to your home. Featuring dainty rosebuds and whimsical polka dots, these nostalgic designs are matched with modern practicality, making them both hard-wearing and beautiful.

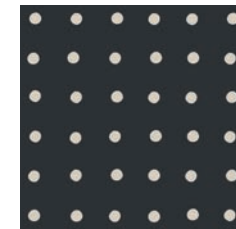


White

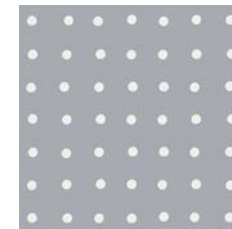


Duck Egg Blue

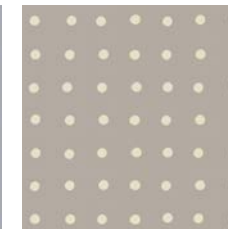
ROSE SPRIG
30.5cm x 45.7cm



Lamp Black

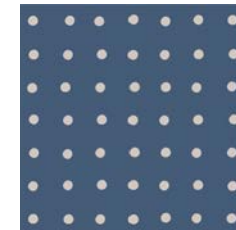


Dove Grey

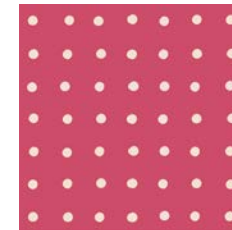


Stone

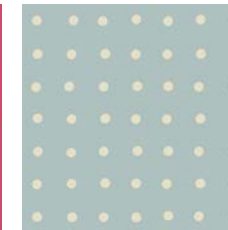
SPOT
30.5cm x 30.5cm



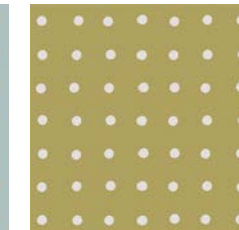
Prussian Blue



Red



Blue



Willow



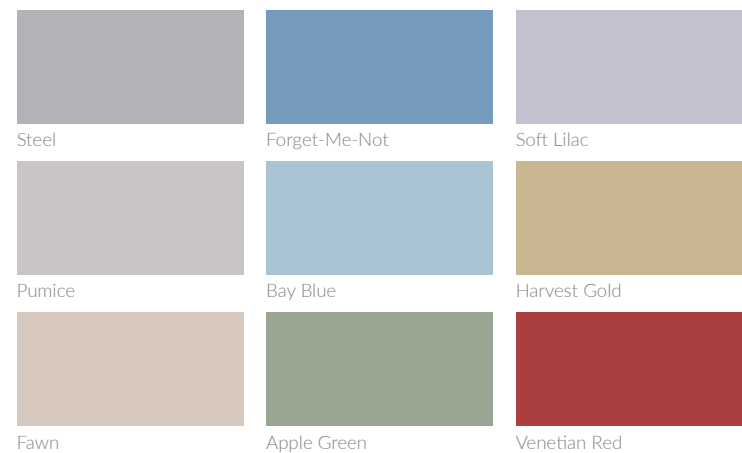
1. Spot Dove Grey
2. Rose Sprig White
3. Spot Prussian Blue



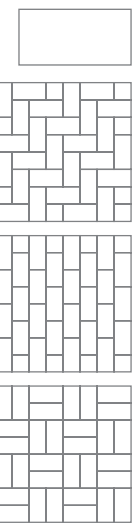
LITTLE BRICKS

Say hello to Little Bricks, a contemporary collection of multi-tonal brick shaped tiles in a fresh colour palette. Their size and shape make them wonderfully tactile, whilst a high-quality finish ensures their incredible durability.

Use them creatively to border a designer tile, or lay as an eye-catching block-coloured floor, choosing from a variety of laying patterns to add texture and pattern to your space.



LITTLE BRICKS
15.2cm x 30.5cm



1. Lattice Pebble Grey with Little Bricks Steel



2. Little Bricks Apple Green



3. Little Bricks Bay Blue, Forget-Me-Not and Steel



1

OTHER FLOORS IN OUR COLLECTION

As well as our exclusive Signature collection, take a peek at our other inspiring floors, designed to suit any home or commercial space.

More Colours

A colourful floor adds a fun and fresh element to any interior. Choose from a metallic, sparkle or matte finish for your striking block coloured floor, or create a classic checkerboard design in any number of shades.

Rubber

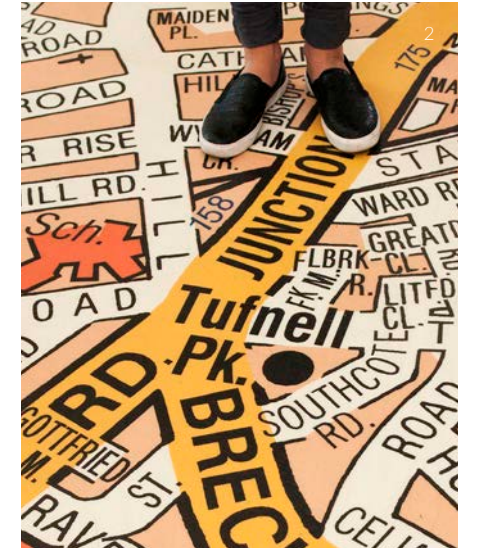
Warm and soft with a little extra 'bounce', rubber flooring is beautifully comfortable underfoot. Perfect for protecting sensitive toes, our rubber flooring is available in smooth, studded and designer finishes.

Custom Designs

Our clever custom service means that we can turn any design, idea or image into a durable sheet vinyl floor. The minimum order is just 12 square metres, and our experienced team are here to help you every step of the way.

Commercial

From unique restaurants to vibrant offices, our floors prove that commercial flooring doesn't have to be boring. All of our designs boast impressive durability and are easy to clean and maintain, making them suitable for the most demanding spaces.



1. Colours Collection
2. Custom Printed Flooring
3. Rubber Flooring



FIND OUT MORE

Get Inspired

For room-by-room style ideas, our online inspiration pages and customer gallery are full of fabulous photos, hints and tips. Or, for something a little more personal, we also offer a free design consultation service to help you create your perfect space.

Order Your Sample

To help you choose the right design, and to make sure it fits your home beautifully, we offer a free sampling service.

Samples provide a more reliable portrayal of the floor than a screen or brochure, where authentic colour reproduction can vary. Our samples are cut from larger tiles and colours can vary slightly from batch to batch.

Take Care

The secret to a floor that stays beautiful is to keep it clean. If there's access to an outside area, a good entrance mat will help trap dirt before it reaches your floor. Then with just a little TLC including regular sweeping and mopping, along with the use of our Floor Care Kit, your floor will look stunning for years to come.

Tile Size & Pack Coverage

Design	Tile/Plank size (cm) (w) x (l)	Pieces per pack	Pack coverage
Premium Wood	15.2 x 91.4	14	1.95 sq m
Neisha Crosland Parquet	30.5 x 30.5	12	1.115 sq m
Neisha Crosland Check	30.5 x 30.5	12	1.115 sq m
Dee Hardwicke Lattice	30.5 x 30.5	12	1.115 sq m
Cath Kidston Rose Sprig	30.5 x 45.7	8	1.115 sq m
Cath Kidston Spot	30.5 x 30.5	12	1.115 sq m
Little Bricks	15.2 x 30.5	24	1.115 sq m



SUPER DURABLE



EASY CARE



BATHROOMS



UNDERFLOOR HEATING



ISO 14001 ENVIRONMENTAL MANAGEMENT SYSTEMS

YOUR QUESTIONS ANSWERED

Are Harvey Maria floors suitable for bathrooms?

Yes. Our floors are completely waterproof and slip resistant, so they are perfect for bathrooms. The tiles butt up tightly together and our recommended adhesive creates a watertight bond.

Are they compatible with underfloor heating?

All Harvey Maria floors are suitable for use with underfloor heating. Simply follow our installation guidelines along with those of the heating system manufacturer, and don't forget to choose high temperature adhesive.

How is Harvey Maria flooring fitted?

A trained fitter will always produce the best results, so ask your retailer about their expert fitting service. Detailed instructions and videos are available on our online Fitting page.

Are Harvey Maria floors guaranteed?

All flooring from our Signature collection is supplied with a 25 year domestic warranty. Ask your retailer for more information, and check full terms and conditions on our website.

How many packs will I need?

Ask your retailer about their measuring service, or use our online Room Size Calculator to work out the number of packs needed to cover your floor.

For any other help, information, or if you just fancy a chat, please don't hesitate to get in touch.





HARVEY MARIA
— FABULOUS FLOORS —



I enjoy being a brochure, so please pass me to a friend when you're finished.

© Harvey Maria Ltd

www.harveymaria.com